





**NATIONAL  
ARCHIVES  
MICROFILM  
PUBLICATIONS**

MICROCOPY

33

ROLL

99

**NATIONAL ARCHIVES MICROFILM PUBLICATIONS**

**Microcopy No. 33**

**POPULATION SCHEDULES OF THE  
FOURTH CENSUS OF THE UNITED STATES**

**1820**

**Roll 9**

**Georgia**

**Volume 4**



**THE NATIONAL ARCHIVES  
NATIONAL ARCHIVES AND RECORDS SERVICE  
GENERAL SERVICES ADMINISTRATION**

**Washington: 1958**



INTRODUCTION <sup>1</sup>

On the 142 rolls of this microcopy are reproduced the population schedules of the Fourth Census (1820) of the United States. The schedules for each State or Territory are bound in one or more volumes. Those for the States of Alabama and New Jersey and the Territories of Arkansas and Missouri were not transferred to the National Archives from the Bureau of the Census and appear to have been lost many years ago. The volumes, each of which has been microcopied on a separate roll, are arranged alphabetically by name of State, Territory, and the District of Columbia, and thereunder by volume number. They are distributed among the numbered rolls of this microcopy as follows:

<u>State or Territory</u>	<u>Roll Nos.</u>
Connecticut . . . . .	1-3
Delaware . . . . .	4
District . . . . .	5
Georgia . . . . .	6-10
Illinois . . . . .	11-12
Indiana . . . . .	13-15
Kentucky . . . . .	16-29
Louisiana . . . . .	30-32
Maine . . . . .	33-39
Maryland . . . . .	40-46
Massachusetts . . . . .	47-55
Michigan . . . . .	56
Mississippi . . . . .	57-58
New Hampshire . . . . .	59-61
New York . . . . .	62-79
North Carolina . . . . .	80-85
Ohio . . . . .	86-95
Pennsylvania . . . . .	96-114
Rhode Island . . . . .	115-117
South Carolina . . . . .	118-121
Tennessee . . . . .	122-125
Vermont . . . . .	126-128
Virginia . . . . .	129-142

<sup>1</sup>This introduction is repeated without change on each roll of the microcopy. On each roll there is also reproduced an introductory note containing a table of contents and information pertinent only to the schedules reproduced on that roll.



The information in the schedules is presented under the names of heads of families. A statistical distribution is given for members of each family by race (including a distinction between free and slave Negroes), sex, and age group. Alongside the name of each head of a family certain statistical information is recorded in the vertical columns running from left to right across a schedule. The first 11 columns record the age-group distribution of white males (under 10, 10-15, 16-18, 16-25, 26-44, and 45 and over) and of white females (under 10, 10-15, 16-25, 26-44, and 45 and over). The 12th column gives the number of foreigners not naturalized; the 13th, 14th, and 15th columns show occupational classification (agriculture, commerce, and manufactures). The 16th to 19th, 20th to 23d, 24th to 27th, and 28th to 31st columns furnish, respectively, the age-group distribution of male slaves, female slaves, free male Negroes and free female Negroes (under 14, 14-25, 26-44, and 45 and over). The 32d column, which is the last, is headed "All other persons except Indians not taxed." The only names, therefore, that appear in the schedules are of heads of families or of persons who were not enumerated within a family or household unit. Because printed forms were not generally used, all or part of the schedules of some localities carry less than the prescribed 32 columns. This apparently occurred in instances where no enumeration was made of persons belonging to groups ordinarily listed under these missing columns, or where the number of persons belonging to these groups was so small that they were listed numerically or by name at the end of the schedules of the locality in which they were enumerated.

Column headings generally do not appear on the schedules themselves but are found at frequent intervals in a volume, usually at the beginning or end of the schedules of a subdivision.

Recapitulations of totals appear at intervals throughout the schedules. These recapitulations were printed in summary form in the Census for 1820, Published by Authority of an Act of Congress, Under the Direction of the Secretary of State (Washington, 1821). This publication, a copy of which is in the National Archives, includes (1) totals of columnar statistical data carried in the schedules for the respective enumeration districts, (2) totals for each county, town, township, city, borough, and parish, and for some wards, (3) totals of columnar statistical data for the entire United States, including Territories, and (4) texts of documents relating to the taking of this census.

Occasionally affidavits attesting to the posting of the returns have been inscribed on or attached to the schedules, and these affidavits have been photographed as they occur in the volumes. Blank pages and occasional manufacturing schedules, inadvertently bound in the volumes, have not been photographed.



The original arrangement of a few of the schedules, which was disturbed when they were bound into volumes, has been largely restored on the microcopy.

Although more than one set of numbers often appears on the schedules, the system of numbering, whether stamped or written, followed in preparing a table of contents for any particular volume is generally that which (1) runs consecutively from beginning to end of the volume, and (2) appears to be consistent with the numbering in other volumes for the same State. Occasionally a schedule is unnumbered.

In the case of entries relating to a single family and appearing on two facing pages both pages have usually been photographed on the same frame of the microcopy. This applies likewise to entries running vertically across two facing pages. All of the schedules are so reproduced on the microfilm that they occupy a normal reading position although many of them were bound otherwise in the volumes.

These schedules are part of a body of records in the National Archives designated as Record Group 29, Records of the Bureau of the Census.



SCHEDULES FOR THE STATE OF GEORGIA

The 5 volumes of schedules for 44 counties of Georgia are reproduced on Rolls 6-10 of this microfilm publication. Schedules for Franklin, Rabun, and Twiggs Counties, listed in the Census for 1820 (cited in the preceding introduction) and in the State recapitulation (in volume 2), are missing. On pages 311-316 of volume 2 (reproduced on Roll 7), the recapitulation for the State shows totals for each county except Elbert and Rabun. The schedules for the 44 counties are distributed among the rolls as follows:

Appling	6	Jefferson	10
Baldwin	6	Jones	7
Bryan	7	Laurens	9
Bulloch	7	Liberty	8
Burke	8	Lincoln	7
Camden	8	Madison	9
Chatham	8	McIntosh	9
Clarke	8	Montgomery	9
Columbia	7	Morgan	10
Early	7	Oglethorpe	7
Effingham	7	Pulaski	9
Elbert	8	Putnam	9
Emanuel	6	Richmond	7
Glynn	7	Screven	7
Greene	8	Tattnall	9
Gwinnett	8	Telfair	10
Habersham	6	Walton	10
Hall	6	Warren	7
Hancock	7	Washington	9
Irwin	6	Wayne	9
Jackson	8	Wilkes	9
Jasper	6	Wilkinson	9



NOTES ON ROLL 9

Reproduced on this roll is the fourth Georgia volume, which has the following backstrip title: "Fourth / Census / 1820 / Population / 4 / Ga. / Laurens / Madison / McIntosh / Montgomery / Pulaski / Putnam / Tattnall / Washington / Wayne / Wilkes / Wilkinson." The volume contains schedules for the counties named.

The table of contents below shows the page where the schedules begin for each county and other subdivision. Recapitulations or column totals appear at or near the end of the schedules for each county except Laurens County for which they are on page 3 and Wilkes County, for which they are on pages 170A and 171. Entries for McIntosh County are in rough alphabetical order by initial letter of surname. The pages of the schedules for Wayne County have been split in the process of rebinding; for example, pages 149 and 150 make a complete page. References in the table of contents are to numbers stamped usually on alternate pages of the schedules; for McIntosh and Wayne Counties, however, numbers are stamped on successive pages. Where a schedule begins on a page that does not have a stamped number, a penciled "A" number (40A, for example) has been used for identification on that page and in the contents.

Laurens County . . . . .	3
McIntosh County . . . . .	19
Madison County . . . . .	40A
Danielsville . . . . .	53A
Montgomery County . . . . .	59
Pulaski County . . . . .	66
Putnam County . . . . .	76
Tattnall County . . . . .	114
Washington County . . . . .	126
Wayne County . . . . .	149
Wilkes County . . . . .	162
Washington . . . . .	197A
Wilkinson County . . . . .	202
Irwinton . . . . .	227A

The volume ends with page 229.



FOURTH CENSUS  
1820  
POPULATION  
GA:  
LAURENS.  
1

Laurens Co. Ga  
1820







Handwritten text at the top left of the page, possibly a title or header.

Fragmented handwritten text on the left side of the page, appearing to be a list or series of entries.

Fragmented handwritten text on the left side of the page, continuing the list or series of entries.

Main body of the page containing a grid of handwritten numbers and symbols, possibly a ledger or data table. The grid is organized into columns and rows, with some cells containing numbers (e.g., 1, 2, 3) and others containing symbols (e.g., checkmarks, crosses).

Handwritten text at the bottom of the page, possibly a summary or footer, including some numbers and symbols.







Fragment of a document with a grid pattern, possibly a ledger or account book. The grid contains handwritten numbers and symbols (such as 'x', 'y', and 'z'). The document is heavily damaged, with large sections missing from the left and top edges. The text is oriented vertically on the page.

Fragment of a document with a grid pattern, possibly a ledger or account book. The grid contains handwritten numbers and symbols (such as 'x', 'y', and 'z'). The document is heavily damaged, with large sections missing from the left and top edges. The text is oriented vertically on the page.

Fragment of a document with a grid pattern, possibly a ledger or account book. The grid contains handwritten numbers and symbols (such as 'x', 'y', and 'z'). The document is heavily damaged, with large sections missing from the left and top edges. The text is oriented vertically on the page.

Fragment of a document with a grid pattern, possibly a ledger or account book. The grid contains handwritten numbers and symbols (such as 'x', 'y', and 'z'). The document is heavily damaged, with large sections missing from the left and top edges. The text is oriented vertically on the page.

Fragment of a document with a grid pattern, possibly a ledger or account book. The grid contains handwritten numbers and symbols (such as 'x', 'y', and 'z'). The document is heavily damaged, with large sections missing from the left and top edges. The text is oriented vertically on the page.



































































	5524	53534	19	58	1937	21	11	123	41	23	10	17			
in Edition	1	1			1	2		4							
1. Oliver					2	1		2							
at Princeton								2							
with ...	2	1	1		2	2		7							
with ...	1	1			3			7							
H. Bassett								2							
H. Hooper	1							3		1	2	1	5	2	5
von ...	1				2	4		1							
at ...					4	1		2							
H. ...					3	1		2		1					
H. ...		2	1	2	1	2		4							
H. ...	1	1	1		2			5							
H. ...	2	1	1		2			4							
H. ...	1				1	1		2							
H. ...	1				1	1		7		1	2	1	2	3	1
H. ...						2		1							
H. ...								1							
H. ...								1							
H. ...	1	1	1		1	1		3							
H. ...	1	1	1	1	1	1		6		2	2	1	2	1	
H. ...	3	1	1	1	1			3		1	1		1	1	
H. ...								4		2	4	1	1	3	2
H. ...	1	1	1	1				2							
H. ...								1							
H. ...	3	1		1	1			5		2	2	5	1	1	1







FOURTH CENSUS  
1820  
POPULATION  
GA.  
MCINTOSH.

17

*Madison County follows this county.*



Georgia

Census

McIntosh County  
1820.

---

Taken by

John Orme Assistant  
to the Marshal D. Beagin











Handwritten ledger entries on a grid. The entries are organized into columns and rows, with some numbers and symbols (like 'u') visible. The text is written in a cursive or semi-cursive hand. Some entries include numbers like 10, 5, 3, 2, 8, 5, 7, 3, 6, 2, 5, 12, 3, 3, 1, 2, 1, 1, 1, 10, 53, 64, 22, 81, 50, 50, 29, 4, 1, 2, 1, 3, 1, 1, 2, 3, 2, 1, 1, 2, 1, 1, 3, 4, 5, 3, 2, 1, 2, 1.

173  
125  
123  
107  
86  
56

110  
56  
40  
142  
161  
27  
59

133  
221  
102  
27  
578











James Pegg	1	2				3	2	1		2		1
Wm. Pugham	1					1	2					1
Sally Dowling		3			1		2			1		1
Mary Leane		1				1	1	1		1		1
B. W. Lester					1	1		1				1
John A. D. S. S.					1							1
Benj. Daughton					1		1	1				1
Henry P. Diamond												
James E. Elands	1					2	1			1		1
Wm. Elands								2				1
David Elands	2					1	1			1		1
Thomas Edue Col												
Melinda Eden Col												
F.												
John Fooks						1						1
Wm. Fulton						1				1		1
James Fowler						1						
Thomas Fuller						2				1		
Elyzabeth Fitzpatrick	1	1				1				1		1
John Fowler						2						1
Wm. G. Gould		2				2				1		1
Patrick Gibson						1	2					1
M. Schustett Gould	1					1		1		1		
James Gignelatt						1						1
Henry Gignelatt						1						1
Daniel Gannon	3	1				1		2				1
Eleanor Gell						1						1
Wm. Gordon						1				1		1
Richard De Goro						1						1
Nancy Goss												1
Robert Grant		1				1	1					1
Robert Gull	2	1				1		2		1		1
Benjamin Gosson						3		5	1			1
Charles Gignelatt						1						1







































Handwritten numbers on a grid background, including sequences like 64648763, 105167158613, 1612951566, 268, 316, 13233, 331412, 101610482, 383211, and 223313.







FOURTH CENSUS  
1820  
POPULATION  
GA.  
MADISON

37

*McIntosh County precedes this county.*



The number of Persons within my Division, consisting of *Madison County*  
of *Georgia* in the year one thousand eight hundred and twenty

*Madison Co. Ga*  
*1820*

Schedule of the whole number

Name of the County, Parish, Township, Town or City, where the Family resides.	Name of Heads of Families.	Free White Males.					Free White Females.					
		Free white males under ten years.	Free white males of ten and under sixteen.	Free white males between sixteen and eighteen.	Free white males of sixteen and under twenty-six, including heads of families.	Free white males of twenty-six and under forty-five, including heads of families.	Free white males of forty-five and upwards, including heads of families.	Free white females under ten years of age.	Free white females of ten and under sixteen.	Free white females of sixteen and under twenty-six, including heads of families.	Free white females of twenty-six and under forty-five, including heads of families.	Free white females of forty-five and upwards, including heads of families.
38		to 10	to 16	16 to 18	16 to 26	to 45	45, &c.	to 10	to 16	to 26	26 to 45	45, &c.



[No. 1.]

, appears in a Schedule hereto annexed, subscribed by me, this  
 7. Dec. 1850 John Sanders Assistant to the Marshal of

North  
 Georgia

37

of Persons within the Division allotted to

Madison Co. Ga  
 1850

38

Number of persons employed in Agriculture	Number of persons employed in Commerce	Number of persons engaged in Manufactures	Slaves				Free Colored Persons												
			Males		Females		Males		Females										
			Males under fourteen	Males of fourteen and under twenty-six	Males of twenty-six and under forty-five	Males of forty-five and upwards	Females of [under] fourteen	Females of fourteen and under twenty-six	Females of twenty-six and under forty-five	Females of forty-five and upwards	Males under fourteen years	Males of fourteen and under twenty-six	Males of twenty-six and under forty-five	Males of forty-five and upwards	Females under fourteen years	Females of fourteen and under twenty-six	Females of twenty-six and under forty-five	Females of forty-five and upwards	All other persons except Indians and blacks
			to 14	to 20	to 45	45, &c.	to 14	to 25	to 45	45, &c.	to 14	to 25	to 45	45, &c.	to 14	to 25	to 45	45, &c.	



Madison County  
Georgia  
1870



25  
Madison  
County

	11	12	13	14	15	16	17	18	19	20
John Sanders	1			1			2		1	
David M. Kirtland				1					1	
Wiggin Strickland	2				1	1			1	
James Bone	2			1					1	
Simon Cardwell	1	2	1	1		1			2	
John Anderson		1			1		3	2		1
Hugh Pealy	3				1			1		1
Burkley King				1			2		1	
William Adair	1				1		1		1	
James Maxwell	2	1			1		1			1
Asst. King					1		2		1	
John Pellet	1				1				1	
Jacob Anderson	2				1		2			1
John Gopett	1	2	1	1	1					1
Whitcomb Holders	1				1		1		1	
Burrell Cox					1			2		1
John Bone	1				1		2		1	
Matthew Brown				1					1	
Jonathan Sanders				1			2		1	
George Hampter		1				1	4	2	2	
Benjamin Tribble	3	1								1
Thomas Tribble	2						4			1
James Anderson	1	1			1	1		2		1
Leonard Hays		1	1	1	1	1		1	2	
Alexander G. Hallett	1			1			4		1	1
Robert Floyd		1	1	2						1
Peter Allen	1						3			1
Edward Ware						1				
William Harris				1	1					
Jacob Strickland		1				1		1	1	
Thomas S. Wash	1									1
Henry Tamm	2	1				1	3	2		1
Stephen Cross		1				1			1	
Robert Cross										1







27  
Madison  
County

Names	11	16	16	16	16	16	16	16	16	16	16	16
Pedrick Schaboway		1		2		1	4	2	1		1	
James Carruth	3	1				1	1	1	1		1	
Isaac McSwain	2					1	3				1	
John Hite	2	1				1	2				1	
Henry Carstens	1	1				1	1	1			1	
Grant A. Taylor	1					1			1		1	
Elisha Banks	3	2	1	1	1	1	2	2			1	
Thomas Melican	2	1			1		4				1	
Richard Whiteoath	2				1		2		1			
Phasant Lister	1				1		1		1			
Edward S. Christian		1			1		3	1	1		1	
Bethel Morgan	1			1			1		1			
Wilson Houghton	2	1			1		1	2	2	1		
Isaac Pittard					1		3			1		
John Barnes	2				1		3	1		1		
William Burks	4	3		1	2				1	1		
John Burks					1						1	
Charles Roth	1	1			1		2			1		
Isaac Strickland	2	1		1		1		1	2	1		
James Hite		1				1					2	
Jacob Burton	3				1					1		
Jonathan Cooper	2				1		1			1		
Kimber Strickland	2	1	1	1	1		1	2		1		
William Miller	4					1	1	1		1		
Wm. H. Williford	1	2			1		3	2		1		
Benjamin Wilsen	1	1			1		2	1		1		
James Eberhart	1			2	1		2		2			
Charles Sims		1				1		1	3			
Thompson C. Strickland	1		1	2	1		1	1	1			
James Cooper	2	1				1	2			1		
Andrew Gailley	1			4	1		3		1		1	







Madison  
County

	17	18	19	20	21	22	23	24	25
Edmund de Smith	1				1		4		1
Peter Smith	1	1			2	1	2		1
Wm B Dudley	1				1			1	
Robert Hiff			1	2					1
William Murray	2				1			1	
James Scott	2		1	2	1				1
Allen Daniel	1	1				1	1	1	1
James Sanders						1			1
Boyan Adair		2		1		1		1	1
Joseph Sanders	2	1			1		2	3	1
John Lukins			1	1		1		2	1
Martin Strickman		1		3		1		1	1
Patrick Scott	1	1	1	2		1	1	1	1
Charles Eby	1					1			1
Thomas Finster	1	2		2		1	1	1	1
Wm K. Payer						1	1	1	1
Robert Barnett	2	2			1		2	1	1
William Albright	2	2			1		2		1
John Collins	3				1			1	1
Mark H. H. H.		1			1	1	2	1	1
Perkins Williams	2	2			1	1	3		1
James McCormick	1	1		1			3	1	1
Edward Lemay				1		1	1	2	1
Christopher Porterfield	3		1	1	1		2	1	1
Conrad Peyton	3						1	1	1
Thomas Gray						1			
John Floyd	1				1		1	1	
Barry Stephens	2	2			1		2	1	
James Drake	1	1	1	2	1		3	1	1
William Stephens	1	2			1		2	2	1
Samuel H. H.		1						1	
Thomas Grayson	1		1	1		1	4	1	2

	17	18	19	20	21	22	23	24	25
1									
2									
3									
4									
5									
6									
7									
8									
9									
10									
11									
12									
13									
14									
15									
16									
17									
18									
19									
20									
21									
22									
23									
24									
25									
26									
27									
28									
29									
30									
31									
32									
33									
34									
35									
36									
37									
38									
39									
40									
41									
42									
43									
44									
45									
46									
47									
48									
49									
50									



Madison  
Society

Names	11	16	14	16	15	15	17	16	20	15	15
James Thompson				1		1		2			1
Leonard H. Hobbs									1		
Benjamin Chubb	1				1	1	1		1		
John G. Patterson						1		1			1
John Wynn	2					2		3			1
John Wynn Jr									1		
Walter Wigham	1								1		
William Davis	1	1		1				2		1	
Robert Woodson	1	1	1	4		1	2	1	1		1
Wm P. Culbertson	1	3	1	2		2	3				
Patrick Buchanan					1					3	
John Russell	1				1		2		1		
Peter David	2	1			1		3			1	
Robert Woods Jr	1								1		
John Wigham	1				1		2	1		1	
David Moon	2				1		1		1		
Robert Brindley	1			1			2		1		
Samuel Green	2				1		1	1			2
James H. Patten				1					1		2
Maryette David				1			1	1			
Joseph Brindley	2				1		1		1		
Samuel Moore	1				1		2	1		1	
Bryce Strickland	2				1		3	2		1	
Levi Alkney	2	1	1	1	1			1		1	1
William Welford		3	1	2		1	3	1			1
James Neal	2	1			1		1			1	
Joel Truman	2	2			1		2	1		1	
John Turner						1	1			1	
John Hall	1					1		1		1	
William Hanna					1		3		1		
William Grayham	1						3			1	







*MADISON  
COUNTY*

<i>Names</i>	11	16	21	26	31	11	16	21	26	31
<i>Abam Summons</i>	1	3		1		2	1		1	
<i>David Pollock</i>		1				1				1
<i>Robt L. Galt</i>				1		2	2			1
<i>Thomas Richard</i>	1			1					1	
<i>William Powell</i>		2	1	1			2			1
<i>John Boynton</i>	1				1	7		7		
<i>John Purr</i>	2		1	1		3			1	1
<i>Quincy Ward</i>								1	2	1
<del><i>William Kelly</i></del>	<del>1</del>	<del>1</del>	<del>1</del>	<del>1</del>	<del>1</del>	<del>2</del>	<del>2</del>	<del>1</del>	<del>1</del>	<del>1</del>
<i>Voluntin Brazwell</i>	2	2	1	1		1	2	1	1	
<i>William Sanders</i>		2	1	1	1	1	1	2	1	
<i>Burrell Segars</i>	2			1		2			1	
<i>John Colby</i>				1		1		1		
<i>William Martin</i>	1			1					1	
<i>George A. Gordon</i>	4			1				1		
<i>Jonathan Hurri</i>	2					1	2		1	
<i>Samuel Hamphill</i>	1	1				1	2		1	1
<i>John Johns</i>	1		1	2	1	2	2		1	
<i>Hardy Shuckler</i>				1		1		1		
<i>John Mason</i>	1			1		3		1		
<i>John Meltingham</i>	2		1	1		1	1		1	1
<i>Josiah Grayham</i>				1		1		1		
<i>William Powers</i>	2		1	2		1	1		1	
<i>Adam Bennett</i>		1		2		1	1	1		1
<i>Clara Ware</i>				1				1		
<i>Solomon Shackelford</i>	2				1			1		
<i>John Stephens</i>		2				1			1	
<i>Charles Willford</i>	1			1		3	2		1	
<i>William Snyders</i>	1			1					1	
<i>Sam'l Gentry</i>	1			1		1		1		
<i>William Wells</i>				1				2		
<i>Philip Wain</i>	2			1		2	1		1	



















	16	15	14	13	12	11	10	9	8	7	6	5	4	3	2	1
1	2	2	-	-	4	4	-	-	-	-	-	-	-	-	-	-
2	1	2	-	-	1	2	-	-	-	-	-	-	-	-	-	-
3	1	-	-	-	1	-	-	-	-	-	-	-	-	-	-	-
4	5	2	1	-	3	2	1	-	-	-	-	-	-	-	-	-
5	1	-	-	-	-	-	-	-	-	-	-	-	-	-	-	-
6	-	-	-	-	1	-	-	-	-	-	-	-	-	-	-	-
7	-	-	-	-	1	-	-	-	-	-	-	-	-	-	-	-
8	6	1	1	1	5	3	1	-	-	-	-	-	-	-	-	-
9	2	-	-	-	2	1	-	-	-	-	-	-	-	-	-	-
10	6	2	2	-	1	-	2	-	-	-	-	-	-	-	-	-
11	-	-	-	-	-	-	-	-	-	-	-	-	-	-	-	-
12	-	-	-	-	-	-	-	-	-	-	-	-	-	-	-	-
13	-	-	-	-	-	-	-	-	-	-	-	-	-	-	-	-
14	1	-	-	-	1	-	-	-	-	-	-	-	-	-	-	-
15	2	6	3	1	3	5	2	-	-	-	-	-	-	-	-	-
16	-	-	-	-	-	-	-	-	-	-	-	-	-	-	-	-
17	-	-	-	-	-	-	-	-	-	-	-	-	-	-	-	-
18	-	-	-	-	-	-	-	-	-	-	-	-	-	-	-	-
19	-	-	-	-	-	-	-	-	-	-	-	-	-	-	-	-
20	-	-	-	-	-	-	-	-	-	-	-	-	-	-	-	-
21	-	-	-	-	-	-	-	-	-	-	-	-	-	-	-	-
22	-	-	-	-	-	-	-	-	-	-	-	-	-	-	-	-
23	-	-	-	-	-	-	-	-	-	-	-	-	-	-	-	-
24	-	-	-	-	-	-	-	-	-	-	-	-	-	-	-	-
25	-	-	-	-	-	-	-	-	-	-	-	-	-	-	-	-
26	-	-	-	-	-	-	-	-	-	-	-	-	-	-	-	-
27	-	-	-	-	-	-	-	-	-	-	-	-	-	-	-	-
28	-	-	-	-	-	-	-	-	-	-	-	-	-	-	-	-
29	-	-	-	-	-	-	-	-	-	-	-	-	-	-	-	-
30	-	-	-	-	-	-	-	-	-	-	-	-	-	-	-	-
31	-	-	-	-	-	-	-	-	-	-	-	-	-	-	-	-
32	-	-	-	-	-	-	-	-	-	-	-	-	-	-	-	-
33	-	-	-	-	-	-	-	-	-	-	-	-	-	-	-	-
34	-	-	-	-	-	-	-	-	-	-	-	-	-	-	-	-
35	-	-	-	-	-	-	-	-	-	-	-	-	-	-	-	-
36	-	-	-	-	-	-	-	-	-	-	-	-	-	-	-	-
37	-	-	-	-	-	-	-	-	-	-	-	-	-	-	-	-
38	-	-	-	-	-	-	-	-	-	-	-	-	-	-	-	-
39	-	-	-	-	-	-	-	-	-	-	-	-	-	-	-	-
40	-	-	-	-	-	-	-	-	-	-	-	-	-	-	-	-
41	-	-	-	-	-	-	-	-	-	-	-	-	-	-	-	-
42	-	-	-	-	-	-	-	-	-	-	-	-	-	-	-	-
43	-	-	-	-	-	-	-	-	-	-	-	-	-	-	-	-
44	-	-	-	-	-	-	-	-	-	-	-	-	-	-	-	-
45	-	-	-	-	-	-	-	-	-	-	-	-	-	-	-	-
46	-	-	-	-	-	-	-	-	-	-	-	-	-	-	-	-
47	-	-	-	-	-	-	-	-	-	-	-	-	-	-	-	-
48	-	-	-	-	-	-	-	-	-	-	-	-	-	-	-	-
49	-	-	-	-	-	-	-	-	-	-	-	-	-	-	-	-
50	-	-	-	-	-	-	-	-	-	-	-	-	-	-	-	-
51	-	-	-	-	-	-	-	-	-	-	-	-	-	-	-	-
52	-	-	-	-	-	-	-	-	-	-	-	-	-	-	-	-
53	-	-	-	-	-	-	-	-	-	-	-	-	-	-	-	-
54	-	-	-	-	-	-	-	-	-	-	-	-	-	-	-	-
55	-	-	-	-	-	-	-	-	-	-	-	-	-	-	-	-
56	-	-	-	-	-	-	-	-	-	-	-	-	-	-	-	-
57	-	-	-	-	-	-	-	-	-	-	-	-	-	-	-	-
58	-	-	-	-	-	-	-	-	-	-	-	-	-	-	-	-
59	-	-	-	-	-	-	-	-	-	-	-	-	-	-	-	-
60	-	-	-	-	-	-	-	-	-	-	-	-	-	-	-	-







1	2	3	4	5	6	7	8	9	10	11	12	13	14	15	16	17	18	19	20
1	1	1	1	1	1	1	1	1	1	1	1	1	1	1	1	1	1	1	1
2	1	1	1	1	1	1	1	1	1	1	1	1	1	1	1	1	1	1	1
3	1	1	1	1	1	1	1	1	1	1	1	1	1	1	1	1	1	1	1
4	1	1	1	1	1	1	1	1	1	1	1	1	1	1	1	1	1	1	1
5	1	1	1	1	1	1	1	1	1	1	1	1	1	1	1	1	1	1	1
6	1	1	1	1	1	1	1	1	1	1	1	1	1	1	1	1	1	1	1
7	1	1	1	1	1	1	1	1	1	1	1	1	1	1	1	1	1	1	1
8	1	1	1	1	1	1	1	1	1	1	1	1	1	1	1	1	1	1	1
9	1	1	1	1	1	1	1	1	1	1	1	1	1	1	1	1	1	1	1
10	1	1	1	1	1	1	1	1	1	1	1	1	1	1	1	1	1	1	1
11	1	1	1	1	1	1	1	1	1	1	1	1	1	1	1	1	1	1	1
12	1	1	1	1	1	1	1	1	1	1	1	1	1	1	1	1	1	1	1
13	1	1	1	1	1	1	1	1	1	1	1	1	1	1	1	1	1	1	1
14	1	1	1	1	1	1	1	1	1	1	1	1	1	1	1	1	1	1	1
15	1	1	1	1	1	1	1	1	1	1	1	1	1	1	1	1	1	1	1
16	1	1	1	1	1	1	1	1	1	1	1	1	1	1	1	1	1	1	1
17	1	1	1	1	1	1	1	1	1	1	1	1	1	1	1	1	1	1	1
18	1	1	1	1	1	1	1	1	1	1	1	1	1	1	1	1	1	1	1
19	1	1	1	1	1	1	1	1	1	1	1	1	1	1	1	1	1	1	1
20	1	1	1	1	1	1	1	1	1	1	1	1	1	1	1	1	1	1	1



Madison County

20  


Names	17	18	19	20	21	22	23	24	25	26	27	28	29	30
George Peyton	-	-	-	-	-	1	-	-	-	-	-	-	-	1
Walter Jones	2	1	-	-	-	1	-	-	2	-	-	1	-	-
David Owen	3	1	-	-	-	1	-	-	2	-	-	1	-	-
Isiah Sterling	2	-	-	-	-	1	-	-	2	-	-	1	-	-
John McKinney	1	-	-	-	-	1	-	-	1	-	-	1	-	-
James Wiley	-	-	-	2	-	1	-	-	-	-	3	-	1	-
Wm. E. Johnson	-	-	1	3	-	1	-	-	-	-	1	-	1	-
John Williams	-	1	-	3	-	1	-	-	-	-	2	-	1	-
Nathan Manning	-	-	-	1	-	1	-	-	-	-	-	-	1	-
Elyah Williams	3	-	-	7	-	1	-	-	2	1	-	1	-	-
Wm. B. Allen	-	-	-	7	-	-	-	-	-	-	1	-	-	-
James Williams	2	-	-	-	-	1	-	-	-	-	1	-	-	-
David Smith	3	-	-	-	-	1	-	-	1	1	-	1	-	-
Shadrach Smith	2	2	-	-	-	1	-	-	1	1	-	1	-	-
Thomas Summers	-	-	-	1	-	-	-	-	1	-	-	-	-	-
John McCord	-	-	-	1	-	-	-	-	-	-	-	1	-	-
James Power	1	-	-	-	1	-	-	-	3	-	-	1	-	-
John D. Thomas	-	-	-	-	1	-	-	-	-	-	-	1	-	-
Downs Hopkins	1	-	-	-	1	-	-	-	1	-	1	-	-	-
Jack New	-	-	-	-	1	-	-	-	4	-	-	1	-	-
Isaac New	-	1	1	4	-	1	-	-	1	-	-	1	-	-
Simon Christian	-	-	-	1	-	-	-	-	2	-	1	1	-	-
Mary McKinney	2	-	-	-	-	-	-	-	1	-	1	1	1	-
John Nelson	3	-	-	-	1	-	-	-	-	-	-	1	-	-
James Warren	-	-	-	-	-	1	-	-	-	-	-	-	1	-
Elyah Rymer	1	1	-	-	-	-	-	-	1	1	-	1	-	-
Francis New	-	1	-	-	-	-	-	-	-	2	-	-	1	-
Elizabeth Richards	-	-	-	1	-	-	-	-	-	-	-	-	1	-
Charlotte Young	-	-	-	-	-	-	-	-	2	-	-	1	-	-
John Lister	1	2	-	-	1	-	-	-	3	1	-	1	1	-
Charles Sovell	2	1	-	1	-	1	-	-	4	3	1	1	1	-
Bowen Holt	-	-	-	1	-	-	-	-	-	-	1	-	-	-
James King	-	1	-	3	-	1	-	-	-	1	-	-	1	-
Charles Wallace	2	-	-	-	1	-	-	-	1	1	-	1	-	-
Jacob Stephens	-	-	-	-	-	-	-	-	-	-	-	-	1	-
Patience Stephens	2	-	-	-	-	-	-	-	2	-	-	1	-	-



	16	14	26	49	45	16	26	45	47
1									
2									
3									
4									
5									
6									
7									
8									
9									
10									
11									
12									
13									
14									
15									
16									
17									
18									
19									
20									
21									
22									
23									
24									
25									
26									
27									
28									
29									
30									
31									
32									
33									
34									
35									
36									
37									
38									
39									
40									
41									
42									
43									
44									
45									
46									
47									
48									
49									
50									

	16	14	26	49	45	16	26	45	47
James Alexander									
Andrew Ripkins	1								
John Fairbanks	1								
Com Bond	3	3							
William Nelson	2	1							
James Kelly									
John Sartain		1	1	2					
John Chick	3	2							
Magister Coker									
Lewis Coker	1	1							
John Jordan	1	1	1						
Eli Jordan									
John Jordan	3								
Samuel Jordan	3								
Charles Burgin	2								
Lucy Major		1	1	2					
William Thompson	1		1						
William Southwick									
John August	2								
Mr Brown	1								
Mr Scoville	4	3	1	1					
John Johnson	2								
Robert H. Smith	2								
James Carrington	4	1							
John Davis	1								
Timothy Carrington									
James Grant									
James Grant	3	1	1	2					
John Smith	1	1							
William May	2	2							
Orlando Johnson	2	2							
Henry White Jr	2								
John Brown									
John May	3								
William Johnson	4	1							
George Jones	4	1							
John Johnson	1								
James White	1								
John May	4	1							







Handwritten text in a cursive script, possibly a ledger or account book. The text is organized into several columns and rows, with some numbers and symbols visible. The script is dense and difficult to decipher due to the image quality.







89	19	46	27	22	49	77	42												
99	26	78	56	22	98	74	21												
09	28	88	73	10	86	47	22												
88	44	94	35	12	63	74	27												
78	16	40	33	23	104	43	22												
68	15	13	27	18	17	84	23												
58	30	78	52	23	18	12	23												
48	15	88	1	19	11	7	23												
38	34	88	2	31	13	8	23												
28	12	88	14	15	8	8	23												
18	16	88	7	18	4	4	23												
9	6	88	2	11	4	4	23												
7	65247	99	62	25	345	116	89	31											
6																			
5																			
4																			
3																			
2																			
1																			
0																			



Madison Ga

1870

Wm Sanders A M for the County of  
Madison

85

36A



FOURTH CENSUS

1820

POPULATION

GA.

MONTGOMERY

57







































To John W. Marshall Esq  
Sir, I have this day sent by my clerk  
which I now forward to you - The number of prisoners of all ages & sexes  
collected from my division, appears to be, 1823. in taking this census I  
have made about 300 miles. I have experienced some difficulties in the  
discharge of this duty, but such as might be expected. I am, Sir, your  
Obedt. Servant - very respectfully Sir I am your Obedt. Servant  
John W. Marshall Esq

John W. Marshall Esq

Montgomery County Georgia



FOURTH CENSUS

1820

POPULATION

GA.

PULASKI

65



110001

110001

123012

110001

	Free White Males					Free White Females					Total	Slaves							
	Under 10	10 to 16	16 to 20	20 to 25	25 to 45	Under 10	10 to 16	16 to 20	20 to 25	25 to 45		Under 10	10 to 16	16 to 20	20 to 25	25 to 45	45 to 60	60 to 75	75 to 90
White Males	1	1	1	1	1	1	1	1	1	1	1	1	1	1	1	1	1	1	1
White Females	1	1	1	1	1	1	1	1	1	1	1	1	1	1	1	1	1	1	1
Slaves																			

Free Colored Persons									
Under 10	10 to 16	16 to 20	20 to 25	25 to 45	45 to 60	60 to 75	75 to 90	90 to 100	Total
1	1	1	1	1	1	1	1	1	1
1	1	1	1	1	1	1	1	1	1
1	1	1	1	1	1	1	1	1	1

309







	1	2	3	4	5	6	7	8	9	10	11	12	13	14	15	16	17	18	19	20
James Thompson																				
John Smith	1																			
William Brown	1	1	1	1	1	1	2			1										
Robert Jones	1			2			2			1				2		2				
Thomas White	4			2			1							3		2	1			
John Doe	2			1			1	1	1	2	3			2				1		1
James Wilson				1																
Robert Taylor				2						1										
Thomas Green				1	1			1	1		1			2				1	3	1
John Adams	1			1	1		2	1	1	1				2						
William Miller	2				1			1						12		4	4	1		3
Robert Clark				1						1				4		1				2
Thomas Lewis	1			1			3		1	1										
John Walker	2	1		1			1	1	2	2				1						1
Robert King	1	1			1		2		1	1				3						1
Thomas Hill				1			2		1					3						2
John Scott							1	1		1				1						1
William Green							1		1					4		2		1	1	1
Robert Adams				1					1					1						
Thomas Baker	2	1	1				1	1	2		1			7	1			1	1	
John Carter	2				1									1						2
Robert Evans	1				1		2	1	1					2						1
Thomas Fisher	2	1					1	1						5		1				3
John Gibson	1	1	1	2			1			1	1									1
Robert Hall	1	1					1			2										2
Thomas Hunt							1			1										2
John Ives	1									1										2
Robert Kelly	1						1	1	1					3		1	2			1
Thomas Lane	2						1	2	1	2	1			2		2	4	2	1	2
John Mack	4	1					1			1				14		2	4	2	1	2
Robert Neal	1									1				1						
Thomas Owen	1						1	1		1				10		3	2	3	2	10
John Parker	1						1	1		1				3		2	2		4	1
Robert Quinn	1	2					1	1		1				3		2	2		4	1
Thomas Reed	1	2					1	1	2	1				14		2	5	7	2	7
John Stone	2	2																		1
Robert Taylor							1			1				1						
Thomas White							1			1				1		2	2			















James Kealey	1		1	4		1	8		1	2			1	
John Wood			1	1	1		1						1	1
John Dwyer			1				1							
John McNeil	1	1	2	1			1			2	2			
John Kelly		1	1	2			2	1					1	
John Jones	18	2		1	1	1	1			4			1	1
John Walker	2			1			1				2	1	1	
William Hall	2			1		1	1			1				
Joseph McNeil	2			1	1		2	1		2			6	4
Robert C. Ferguson				1			1							
George Walker		1	2	1		2	1		1	20	11	9	7	6
William Hayes	2			1		2	2	1		2			1	
Henry Smith	1					2		1		4	2		1	1
John Smith				1	1		1	1	1	2	4		1	2
George D. Smith				2		1	2	1		1				
John Dwyer	1			1		2		1		1				
James Kelly				1		1								
Richard Jones	2	2		1	1	2		1		2				
George Dwyer	1			2		1	1	1		2				
William Hayes	1			1		2	1	1		1				
John Dwyer	1	1		2		2	1			7	1	1	4	1
John Dwyer	2	2		1		1	1	1		1				
Richard Jones	2			1		2	1	1		1				
William Hall	1			1	1	1	1	1		2				
James Kelly	1	1		1				1		1				
Robert C. Ferguson	1			1		1	1	1		1		1		
George D. Smith	1			1				1		1				
William Hayes	1			1		1	1	1		2				
John Dwyer	1			1		1	1	1		1				
James Kelly	1			1				1		1				
Richard Jones	1			1		1	1	1		2				
George D. Smith	1			1		1	1	1		1				
William Hayes	2			1		2		1		2	1	1	1	1
John Dwyer	1			1	1	1	1	1		14	7	2	1	2
James Kelly	2	1		1		2		1		1				
Richard Jones				1		2	1			1				
George D. Smith	1			1		2		1		2				
William Hayes	1			1		2		1		2			2	2
John Dwyer	3	1		1		1	1	1		1				
James Kelly	2			1		2	1	1		2				
Richard Jones	2			1		2	1	1		1				
George D. Smith	2			1		2	1	1		1				
William Hayes	2			1		2	1	1		1				
John Dwyer	2			1		2	1	1		1				
James Kelly	2			1		2	1	1		1				
Richard Jones	2			1		2	1	1		1				
George D. Smith	2			1		2	1	1		1				
William Hayes	1	1	1	1	1	2	1	1		2				























	1	2	3	4	5	6	7	8	9	10	11	12	13	14	15	16	17	18	19	20
James Buchanan	1	1	1	1	1	1	1	1	1	1	1	1	1	1	1	1	1	1	1	1
Quincy Adams	2	1	2	1	1	2	1	1	1	1	1	1	1	1	1	1	1	1	1	1
Edmund Ross	1	1	1	1	1	1	1	1	1	1	1	1	1	1	1	1	1	1	1	1
Thomas Hart Benton	1	1	1	1	1	1	1	1	1	1	1	1	1	1	1	1	1	1	1	1
John C. Calhoun	1	1	1	1	1	1	1	1	1	1	1	1	1	1	1	1	1	1	1	1
William H. Van Buren	1	1	1	1	1	1	1	1	1	1	1	1	1	1	1	1	1	1	1	1
John Tyler	1	1	1	1	1	1	1	1	1	1	1	1	1	1	1	1	1	1	1	1
James K. Polk	1	1	1	1	1	1	1	1	1	1	1	1	1	1	1	1	1	1	1	1
Franklin Pierce	1	1	1	1	1	1	1	1	1	1	1	1	1	1	1	1	1	1	1	1
Millard Fillmore	1	1	1	1	1	1	1	1	1	1	1	1	1	1	1	1	1	1	1	1
Frederick Douglass	1	1	1	1	1	1	1	1	1	1	1	1	1	1	1	1	1	1	1	1
Abraham Lincoln	1	1	1	1	1	1	1	1	1	1	1	1	1	1	1	1	1	1	1	1
Andrew Johnson	1	1	1	1	1	1	1	1	1	1	1	1	1	1	1	1	1	1	1	1
Ulysses S. Grant	1	1	1	1	1	1	1	1	1	1	1	1	1	1	1	1	1	1	1	1
Rutherford B. Hayes	1	1	1	1	1	1	1	1	1	1	1	1	1	1	1	1	1	1	1	1
James A. Garfield	1	1	1	1	1	1	1	1	1	1	1	1	1	1	1	1	1	1	1	1
Chester A. Arthur	1	1	1	1	1	1	1	1	1	1	1	1	1	1	1	1	1	1	1	1
William McKinley	1	1	1	1	1	1	1	1	1	1	1	1	1	1	1	1	1	1	1	1
Theodore Roosevelt	1	1	1	1	1	1	1	1	1	1	1	1	1	1	1	1	1	1	1	1
Woodrow Wilson	1	1	1	1	1	1	1	1	1	1	1	1	1	1	1	1	1	1	1	1
Tommy Wood	1	1	1	1	1	1	1	1	1	1	1	1	1	1	1	1	1	1	1	1
John D. Rockefeller	1	1	1	1	1	1	1	1	1	1	1	1	1	1	1	1	1	1	1	1
Andrew Carnegie	1	1	1	1	1	1	1	1	1	1	1	1	1	1	1	1	1	1	1	1
J.P. Morgan	1	1	1	1	1	1	1	1	1	1	1	1	1	1	1	1	1	1	1	1
John D. Hooker	1	1	1	1	1	1	1	1	1	1	1	1	1	1	1	1	1	1	1	1
John G. Thompson	1	1	1	1	1	1	1	1	1	1	1	1	1	1	1	1	1	1	1	1
John W. Aldrich	1	1	1	1	1	1	1	1	1	1	1	1	1	1	1	1	1	1	1	1
John C. Spooner	1	1	1	1	1	1	1	1	1	1	1	1	1	1	1	1	1	1	1	1
John W. Foster	1	1	1	1	1	1	1	1	1	1	1	1	1	1	1	1	1	1	1	1
John W. Weeks	1	1	1	1	1	1	1	1	1	1	1	1	1	1	1	1	1	1	1	1
John W. Aldrich	1	1	1	1	1	1	1	1	1	1	1	1	1	1	1	1	1	1	1	1
John W. Aldrich	1	1	1	1	1	1	1	1	1	1	1	1	1	1	1	1	1	1	1	1
John W. Aldrich	1	1	1	1	1	1	1	1	1	1	1	1	1	1	1	1	1	1	1	1
John W. Aldrich	1	1	1	1	1	1	1	1	1	1	1	1	1	1	1	1	1	1	1	1
John W. Aldrich	1	1	1	1	1	1	1	1	1	1	1	1	1	1	1	1	1	1	1	1
John W. Aldrich	1	1	1	1	1	1	1	1	1	1	1	1	1	1	1	1	1	1	1	1
John W. Aldrich	1	1	1	1	1	1	1	1	1	1	1	1	1	1	1	1	1	1	1	1
John W. Aldrich	1	1	1	1	1	1	1	1	1	1	1	1	1	1	1	1	1	1	1	1
John W. Aldrich	1	1	1	1	1	1	1	1	1	1	1	1	1	1	1	1	1	1	1	1
John W. Aldrich	1	1	1	1	1	1	1	1	1	1	1	1	1	1	1	1	1	1	1	1
John W. Aldrich	1	1	1	1	1	1	1	1	1	1	1	1	1	1	1	1	1	1	1	1
John W. Aldrich	1	1	1	1	1	1	1	1	1	1	1	1	1	1	1	1	1	1	1	1
John W. Aldrich	1	1	1	1	1	1	1	1	1	1	1	1	1	1	1	1	1	1	1	1
John W. Aldrich	1	1	1	1	1	1	1	1	1	1	1	1	1	1	1	1	1	1	1	1
John W. Aldrich	1	1	1	1	1	1	1	1	1	1	1	1	1	1	1	1	1	1	1	1
John W. Aldrich	1	1	1	1	1	1	1	1	1	1	1	1	1	1	1	1	1	1	1	1
John W. Aldrich	1	1	1	1	1	1	1	1	1	1	1	1	1	1	1	1	1	1	1	1
John W. Aldrich	1	1	1	1	1	1	1	1	1	1	1	1	1	1	1	1	1	1	1	1
John W. Aldrich	1	1	1	1	1	1	1	1	1	1	1	1	1	1	1	1	1	1	1	1
John W. Aldrich	1	1	1	1	1	1	1	1	1	1	1	1	1	1	1	1	1	1	1	1
John W. Aldrich	1	1	1	1	1	1	1	1	1	1	1	1	1	1	1	1	1	1	1	1
John W. Aldrich	1	1	1	1	1	1	1	1	1	1	1	1	1	1	1	1	1	1	1	1
John W. Aldrich	1	1	1	1	1	1	1	1	1	1	1	1	1	1	1	1	1	1	1	1
John W. Aldrich	1	1	1	1	1	1	1	1	1	1	1	1	1	1	1	1	1	1	1	1
John W. Aldrich	1	1	1	1	1	1	1	1	1	1	1	1	1	1	1	1	1	1	1	1
John W. Aldrich	1	1	1	1	1	1	1	1	1	1	1	1	1	1	1	1	1	1	1	1
John W. Aldrich	1	1	1	1	1	1	1	1	1	1	1	1	1	1	1	1	1	1	1	1
John W. Aldrich	1	1	1	1	1	1	1	1	1	1	1	1	1	1	1	1	1	1	1	1
John W. Aldrich	1	1	1	1	1	1	1	1	1	1	1	1	1	1	1	1	1	1	1	1
John W. Aldrich	1	1	1	1	1	1	1	1	1	1	1	1	1	1	1	1	1	1	1	1
John W. Aldrich	1	1	1	1	1	1	1	1	1	1	1	1	1	1	1	1	1	1	1	1
John W. Aldrich	1	1	1	1	1	1	1	1	1	1	1	1	1	1	1	1	1	1	1	1
John W. Aldrich	1	1	1	1	1	1	1	1	1	1	1	1	1	1	1	1	1	1	1	1
John W. Aldrich	1	1	1	1	1	1	1	1	1	1	1	1	1	1	1	1	1	1	1	1
John W. Aldrich	1	1	1	1	1	1	1	1	1	1	1	1	1	1	1	1	1	1	1	1
John W. Aldrich	1	1	1	1	1	1	1	1	1	1	1	1	1	1	1	1	1	1	1	1
John W. Aldrich	1	1	1	1	1	1	1	1	1	1	1	1	1	1	1	1	1	1	1	1
John W. Aldrich	1	1	1	1	1	1	1	1	1	1	1	1	1	1	1	1	1	1	1	1
John W. Aldrich	1	1	1	1	1	1	1	1	1	1	1	1	1	1	1	1	1	1	1	1
John W. Aldrich	1	1	1	1	1	1	1	1	1	1	1	1	1	1	1	1	1	1	1	1
John W. Aldrich	1	1	1	1	1	1	1	1	1	1	1	1	1	1	1	1	1	1	1	1
John W. Aldrich	1	1	1	1	1	1	1	1	1	1	1	1	1	1	1	1	1	1	1	1
John W. Aldrich	1	1	1	1	1	1	1	1	1	1	1	1	1	1	1	1	1	1	1	1
John W. Aldrich	1	1	1	1	1	1	1	1	1	1	1	1	1	1	1	1	1	1	1	1
John W. Aldrich	1	1	1	1	1	1	1	1	1	1	1	1	1	1	1	1	1	1	1	1
John W. Aldrich	1	1	1	1	1	1	1	1	1	1	1	1	1	1	1	1	1	1	1	1
John W. Aldrich	1	1	1	1	1	1	1	1	1	1	1	1	1	1	1	1	1	1	1	1
John W. Aldrich	1	1	1	1																







1960  
FURNACE  
GA.  
PURNAM







# Captain Hugh Ector's District

Benjamin Smith	2		1	5	1	1		2	2					
John Brown			1					1						
William Hill			1					1						
James Wright	1		1					3						
John Jones				1	1	1	1	4						
James Perry			1											
William Lane			1											
George Baker			1											
Samuel Cooper			1				1	5		1	1	1	1	
Abraham Parker			1					1						
Edward Duff	1			1	2	2	1							
Jacob Edwards			1		1	1		2	2	1	1			
Hugh Ector			1			1	1	7	2	2	1	2	2	1
Solomon Lewis	2	1	1		1	2		4	2	1	✓	2	1	1
James Reynolds			1			1	1	2						1
Abraham Young	2		1	1	2	1	1	5		1		2	4	
John Thomas	2		1		2	1	1	7						
Francis Williams	2		1		1	1	1	10	5	2	5	5	5	
Benjamin Roper	2	2	1		1	1	1	6		1		2	1	
Henry B. Hill	5	5		1	2	1	2	5	2	1		2	1	1
Dana Daniels			1		1		1	1						
Thomas Deane	2	1		1			1	1						
James Green					1			1						
Northard Brown			1		1	1		1						
William Roberts			1					1						







# Captain John Hendricks District

John & Taylor	1			1				1		1								
Smith Scott	1	2			1	1	1	1	4	1		2	1	2	1	1	1	1
Allen Gubbling	1				1			1		1			1					1
John Stokes	1				1			1		2		1						1
Thomas Jones	2				1	1		1		4		5	4			1	2	1
William Jones					1					1								1
Thomas W. Johnson					1					2			1					1
Joseph Huntley	1	1	1		1	2	2	2	1	1		2	3	2		1	1	1
Abner Ward	2				1	1	2	2	1	1	1	4	5		1		1	1
John Jones	1	2			1	1	2	1	1	1		8	5	2	2	1	2	1
Goodrich Jones	2	1	1		1	2	1	1		1		11	1	1		2	1	1
Thomas Ray					1					1								1
Joseph Willson	2	2			1				1	1		4			1			1
John Colman					1		1	1		1		6	3	2			2	3
Wesley Jones					1					1		1					1	1
James Corwin	1				1		1	1		1		1						
John Scurlock					1					1		1						
Washington Jones	2				1				1	1		6	3				1	1
Isaac Jones	1				1	1	1		1	1		3				2	1	1
Isaac Watts	2	2			1	1	2	1	1	1		6	5	1	1	5	4	
Richard Williams					1					1		3		1	1		1	
Benjamin Hawkins	3	2			1	1	3		1	1		4						
James Taylor					1					1		1						
Richard Taylor					1					1		1						
James Rogers					1				1	1		1						
John Jones	1	1			1	1	1	1	1	1		2						
John & Thomas	2				1	1	3	1	1	1		2						























James B. Colburn	2	1		1		1				4			1	1	2				
Shepley & Co	4	2		1		1	1	1		4			2	1	1				
Samuel A. [unclear]						1													
John Phelps				1						1									
George Chatham	3			1				1											
Isaacus [unclear]	2	1		1		2	1	1		8		5	2	2	1	4			
Wm Arnold	2	2				1	1	1	1	2		1	1		1				
Daniel Bump	1					1				1				2	1	1			
Nathan Bump				1						1									
Wm Chaughead	4	1				1	1	3	1	4		2	1	1	3	2			
Wm Batchelder	2	1	1	1	1	2	2	2		4									
Peter Baudin			1	1		1	1			2			1	1	1	1			
Major [unclear]						1													
Rebecca Rutledge	1															1			
James A. [unclear]						1		1		6		1	3	5	4	1			
John [unclear]				1						1									
David [unclear]	1							1		2						1			
Henry [unclear]	1								1										
John G. Walker	6	8				1	2	1	1	13		3	6	4	4	2			
Voluntary [unclear]				1															
Edmund [unclear]	1			1		1	1			6		3	2	3	2	2			
Wm [unclear]				1						1									
Nathan [unclear]	3	1		1		1	1	2	1	8		7	2	1	3	2			
	49	31	4	15	16	15	25	19	23	10	8	12	46	28	21	4	60	25	22























Henry Woodland				1	1			1	2	1				1			
David Mather	1			1	1			1	1	1	1	1	1	1	1	1	1
Warren Deane	1	1		1	1			1	1	1	1	1	1	1	1	1	1
Richard Corwin	2	2		1	1	1		1	1	1	1	1	1	1	1	1	1
Smith & Co	1			1	1			1	1	1	1	1	1	1	1	1	1
William Washburn	1	1		1	1	1		1	1	1	1	1	1	1	1	1	1
John Harrison	2			1	1	1		1	1	1	1	1	1	1	1	1	1
George King	1	1		2	1	1		1	1	1	1	1	1	1	1	1	1
John Brooks	2			1	1	1		1	1	1	1	1	1	1	1	1	1
Admiral Rogers	1			1	1	1		1	1	1	1	1	1	1	1	1	1
Johnson & Phelps				1	1	1		1	1	1	1	1	1	1	1	1	1
James Cummings	1	1		1	1	1		1	1	1	1	1	1	1	1	1	1
Wells & Dent	1			1	1	2		1	1	1	1	1	1	1	1	1	1
James Thompson		1		1	1	2		1	1	1	1	1	1	1	1	1	1
William & Sons		1		1	1	1		1	1	1	1	1	1	1	1	1	1
James Stewart	1			1	1	1		1	1	1	1	1	1	1	1	1	1
Stephen Stewart				1	1	1		1	1	1	1	1	1	1	1	1	1
John Smith	2	1		1	2	1	1	1	1	1	1	1	1	1	1	1	1
James Smith	2	1	1	1	2	1	2	1	1	1	1	1	1	1	1	1	1
Jonathan Woodruff	2	1	1	1	1	1	1	1	1	1	1	1	1	1	1	1	1
Eliza & Sons	2	2		1	1	1		1	1	1	1	1	1	1	1	1	1
John Cook	1	2	1	1	2	1	2	1	1	1	1	1	1	1	1	1	1
Thomas & Sons								2	1	1	1	1	1	1	1	1	1

28	20	4	18	16	18	18	22	27	26	14	145	50	28	28	10	50	22	22	10
33	3	1	3	17	2	19	5	20	5	3	51	16	7	4	7	9	9	7	
49	16	2	25	21	15	55	20	10	19	10	167	64	38	27	11	66	37	32	9
119	39	7	46	53	33	105	49	57	51	26	365	137	73	68	23	136	68	62	19



















# Captain John H. Butts District.

Edward Abbott	1	1	1	1	1	1	1	1	6	3	2	1	3	1	1
Benjamin Bluffe	2			1	1	1	1		10	5	4	2	9	3	4
Benjamin Calhoun	1			1		1	1		5	2	0		7	3	1
Clara Boyman	3			1	2	1			9	1	3	1	6	4	1
David Lewis	3	1		1	1	1	1		4	3	1	1	1	1	
Lucas Rivers	1		1		4	1			8	1	1		2	1	
Walter H. Walker				1		1			16	4	9	6	3	3	1
Stephen Hott	3	4	3	1	1	1	1		9	2	1	3	4	2	4
Edmond Watts				1					1						
Simon Hunt				1											
Wm. Catledge				1					1						
Samuel Fuller	4	1		1	1		1		2	1					
Mathew Walker				1					1	1			1		
George Brewer				1	2	1			1				1		
Wm. Henderson	2	1	1		1	2	1		7	2	2	3	3	1	2
John Jones				1					4	2	1	1		3	
Washburn Butts				1	3		1		7	5	2		2	2	2
Wm. W. Walker				1					3	1	1				1
James Ashley	2			1	3	1	1	1	7						
John H. Butts	1			1	4	1			5	2	1	1	4		2
John L. Sillman	2			1	1		1		7						
Samuel Davis	1			1	1		1		6	2	2	2	2		2
Washburn Howard				1	1		1		3			1	1		1
Richard Clark				1					2		2				















John Cooke			1																
John Stone	2	2	1			1			2					1					
Richard Parr	1		1		2	2		1	2		5	1	2	1	2	1	1	1	
William Bond			1		1			1	2										
Robert Vinton	1			1	2	1		1	1		5	2		1		2			
John M. Corwin	2		1		1	2		1	2										
William Lusk	1		1	1				1	1		2								
Volunteer Board	3		1					1	2				1	1					
James Luntford	1		1					1	2										
James Stamp			1	1	1	1		1	2										
John Luntford	2			1	2	2		1	1										
John Sanders	3		1		1			1	3		1								
Garrison School			1																
Miss White	3		1		2	1		1	3				5	2					
James B. Brown	3		1		2	1		1	2				1						
Charles Hicks	2		1		1			1	1										
Lockhart School			1		5	1		1	3				2	1	2				
George Reynolds			1		2	2		1	2		1								
William White	1		1		1			1	2										
John Johnson	-2		1		5			1	5		5		2	1					
Robert Brown			1		2			1											
James Bond	1			1				1											
John Thomas	1			1	1	1	2	1	1										
William Lusk	1		1					1											
William Lusk	1			1	2	1			1										
John Luntford	3		1					3	5		1	1	1	1					
John Luntford			1						1										
John Luntford			1					1	1		1								

1871











































John W. ...				1	2	1			12										
Mathias Farley	1			1					5										
Thomas Barrow	2			1	2				5										
Chapman Cox				1		1			5										
William Barrow	2	1		1	2				4										
Samuel Crowder	1			1	2	1			4										
Mathias Tomlinson				1					1										
John B. Powell				1					1										
Marion Powell	1	2		1	1	2	1	2	7										
John Williams				1					1										
William Stearns	1	2	1	1	1	4			6										
John P. Stone	1			1		2			1										
Walter Scott						1			1										
John W. Lloyd				1		1			1										
Robert Kennerly	1	1		1	1	4	1	1	8										
John Barrow				1		1	2	1	1										
Samuel & Madison	2	1	1			1			3										
Samuel Crowder						1			1										
George Wilkinson						1		1	1										
Carroll Cox	4	1		1	1	2	2		4										
Thomas Bate	2			1		1		2	4										
Samuel Pittman	1	2		2	1	2		1	5										
Orator Daniels	2			1	1	2		1	4										
William Bowdoin	2	1		1		1	1		2										
William Grant	3					1	1	1	1										
John C. Anderson				1					1										
Marion Guzman	2					1	5	1	3										
Samuel White				1					1										
Geo. White	2			1		1			1										
Samuel Kelly	2	2				1	1		2										
Elizabeth Smith	1								1										
	56	25	20	25	26	19	61	22	26	31	74	20	58	58	36	4	44	27	38















William Thomas	1	1			1	1				5				5	4		1	
John Balloway	2	2		1	1	2	2		1	8				1		1	2	
William Mettins	1				1		1		1	3				1				
Thomas Sparks	2	2		1	1		1		1	7				2			1	
John Pindus				1						1								
John Ho Bransford	1			1		1		1		3				1		1		
Isiah Jones	1			1		2		1		3				1	1	1		
James Hamilton	2			1		2	2	2	1	10			11	4	3	1	3	
Thomas Vols	1			1		1	1		1	4				1		1	1	
Thomas Baskin	2	2		1		1	1		1	7								
Joseph Parsons				1						1				1				
Abijah White	2			1		2			1	5								
John Kendrick				1						1								
William Farris	2			1		2	1		1	6				1		1		
John Lee Lee				1					1	2				2		2		
Elyah Mathews				1			1			2				2				
Bluford Phillips				1		2	2		1	5				1		2	1	
Johnathan Phillips				1		2	2		1	6								
Robert Potters				1						1							1	
John White	1			1		1			1	4				5		1	1	
William Jackson	2	2	1	1		1	2	2	1	11				5	5	2	1	
John Holcomb	2			1		1	2	1	1	8								
Henry Garland	1	2		1		1	1	1	1	7								
James Ward				1					1	2				1		1		
Alexander Cook	2	1	1	1		1			1	29			16	6	6	3	9	
Orlando Howard				1		1			1	4				1		2		
Adam Leonard	2			1		2	1		1	7				3		1	2	
	65	82	6	38	35	16	37	38	27	20	16		157	87	26	28	7	76
	26	19	3	18	14	5	21	12	18	8	-2		74	42	17	4	4	21
	91	101	9	56	49	21	58	50	45	28	14		231	129	42	32	11	97























Name	1	2	3	4	5	6	7	8	9	10	11	12	13	14	15	16	17	18	19	20
Henry Stamp	1																			
James G. Stamp																				
Asahel Adams			1	1																
Mathew Stamp	2	1	1	3	1	1	1													
William Stamp	1			1		1														
Levi Jackson			1																	
William Bradley			1	1	1															
Levi Stamp	2		1	1																
Stephen P. Scott			1	3		1														
George Cannon	1		1			1														
William H. Godwin	2		1	1		1														
John H. Henshaw			1			1														
Timothy L. Lathrop	2		1	3		1														
Miss Pudgett	3	2	1	2		1														
Robert Sparks	3		1	2		1														
Thomas Gray				1																
Clavel Rice			1																	
Mathew Tobey	1	1	1	1	1	1	1	1												
William Stamp	1	1	1	1	1	1	1	1												
Levi Stamp	1	2		1	1	2	2	1												
John Henshaw			1																	
William S. Satter			1																	
Levi Stamp			1																	
John Henshaw			1	1	3	1	1													
John Henshaw	1		1	1	3	1	1													
John Henshaw			1																	
James Bradley			1																	
John Henshaw	3	1	1	1	1	1	1													
John Henshaw	3																			

20 21 22 23 24 25 26 27 28 29 30 31 32 33 34 35 36 37 38 39 40 41 42 43 44 45 46 47 48 49 50 51 52 53 54 55 56 57 58 59 60







Nathaniel Sadler	2	3			1	7	1	1	1	16		5	9	1	1	2	4	1
Charity Adams	1				1	2	1	1	1									
Thomas Sherburn	2	1			1	3			1	2								
Elisha Vinson					1				1	1								
Abner Vinson	1				1	3		1	1	1								
Mary Smith	1	1			1	1	1	1	1	1								
Bartlett Day					1					1								
William Rowell	3				1			1		1								
Wesley Smith	1				1	1	1	1	1	1						1		
Thomas Wood	1				1	1	1	1	1	6		2	1	2	1	1	1	1
James Johnson	3	1			1	3	2	1	1	12		5	1	4	2	5	2	3
James Johnson					1	2			1	3			1	1			1	
John Johnson	1	1			1	1				1								
Robert Smith					1			1	1	1								
William Adams					1			2	2	7								
James Ledbetter	2	1			1	1			1	4		1			1			1
William Adams	2				1	2	3		1	7		2						
Francis Scott					1					1								
John Ledbetter					1					1								
Stephen Collier	1				1	1	1		1	2								1
Samuel Collier	1				1				1	1								
Cash Collier	1	1			1	3			1	2								
John Smith					1					1								
John Adams	2				1					1								
David Adams	1	1			1	1	1	1	1	4		1	1		2	1		1

40	22	1	29	17	26	50	27	24	23	18	148	10	35	35	1	88	36	17
29	20	7	22	25	70	61	19	19	24	4	120	27	27	14	5	36	21	9
109	22	14	22	22	36	111	46	43	47	11	276	37	66	31	11	69	61	28



# Captain Geo. Suckner's District.

Thomas Withby	1		2	4	1	1	1	5		1	1	1		
William B. Smith	5		1	3			1							
James Bay	2	1		1	1		1	5	2		5	1	2	
John T. Johnson	4		1		1			1						
William Stone	1	1		1	2	2	1	3	1	1	1	2		
Samuel Rogers	2		1		1									
Benjamin Shepard	2			1	1		1	5	2				1	
John Lyackey	4		1		1		1	3	1	1	1	1		
Thomas Reynolds	1	1		1			1	2	2	1	1	1		1
Jacob Thrasher	1		1				1	1			1			
John Wells	1		1				1							
Lucas Daniel	1		1		1	2	1	6	1	1	1	2	1	
James Daniel			1		1		1	1	1		1		1	
Grace Johnson			1					4	1	1	1	1	1	
Robert Clark			1		2		1							
Anna Lovett	2	1	1				1	1						
Benjamin Wilson	2	2		1		2	1	3		1			1	
Thomas Mathis	1	1	1		2	2	1	4	2		2	2		
Shepherd King				1	1			1						
John Jones			1					1						
Samuel P. Lewis	2		1		2	2	1	3			1	1		1
Benjamin Smith	2		1		1		1	1						
John Doe			1		2		1	3	2			1		
Robert Green	1		1		1		1	2						
William Brown			1					1						
James Wilson			1		1		1	3	1		1	1		



































Thomas de la Piere	1																		
John L. Jackson	2			2															
North Evans	2			1															
Thomas Jambles																			
Philip Cook	1																		
John Barker	1			3															
Robert Blanton																			
Seaton B. Page																			
William Williams																			
Buckley Sanderson									2										
James L. Grand	1	1	1	2	1														1
John et. Gubbert	2		2	4	1	1	1	1	40	25	4	12	9	15	10	15			8
George H. Wicket		1	1									2							
John Wicket																			
David Smith																			
William Tracy	1		1							5				2					2
John Chival																			
Edward Warren	2		1						4	2	1	1		1	2				3
John W. Barker			2	1															
Charles H. H. H.	1	1			1				6	2	1	1		1					1
John et. et. et. et.																			
Andrew Throck	3		1	2	1				2					1					
William H. H. H.		1																	
Nathan Lyman	2		1						25	70	7	2	4	9	6	2			1
Robert H. H. H.			1																
John H. H. H.			1																
Samuel H. H. H.			1	1						1	2			2	2				2
William H. H. H.			1																
John H. H. H.																			

100















































Putnam Co. Ga.

1820

Putnam Co. Ga.

1821

18

Putnam Co. Ga.



FOURTH CENSUS

1820

POPULATION

GA.

TATNALL.

113



The number of persons within Tottum County consisting of 2639, appears in a Record made on the 30th day of October in the year one thousand eight hundred and twenty seven by the Marshal of the District of Georgia

Abstract of the whole number of persons in this Tottum County

Name of the Person	Name of Head of Family	Whites		Negroes		Total	
		Males	Females	Males	Females	Males	Females
15	Elizabeth			1	1		
16	Richard	3	2	1	2	3	1
17	R. B. Jernall	1		1		1	
18	Joseph		1	1	1		1
19	Wm. Smith	1	1	2	1	1	
20	John		1	1	2	1	3
21	John		1		1	1	
22	John	1	1	2	1	1	
23	John	2	1	1	2	2	
24	John		1		1	2	1
25	Wm. Grace	1	1	2	1	1	4
26	Thomas	1	1	2	1	1	

All of the above  
 are of the County  
 of Tottum  
 Georgia



230	Matha Rose	2		1	1					4			
236	Peter Egan		1	2	1	2		1	1	6			
239	Andrew C. Smith		1	1	1	1				4			
238	Wm. Higg		1	1	1	1				4			
239	Amos Anderson	5	1	1	1	1				6			
240	Jane Gillman	8	1	2	1	1	6	4	1	2	2	1	20
241	George Statika		1	1	1		2						4
242	Wm. Anderson		1	2	1	1							5
243	Brice Anderson	2	1	1	1	2	1	2					7
244	Benjamin Hurd	3	1	1	1	1							6
245	Andrew C. Smith	1	1		1		1						3
246	Wm. Higg	1	1	2	1	1							5















177	Wm. Swan	2	1	1	1	1	1	4	1	2	13
178	John Combs	3	1	2	1	1	1	4	2	2	17
179	Reuben Hall		1	1	1	1	1	2	2	1	14
180	Samuel Hodge	2	1	2	1	1	1	2			8
181	Wm. Hobbly	2	1	2	1	1	1	2			6
182	Wm. Rogers		1	2	1	1	1	2			6
183	Wm. Blackman		1	1	1	1	1	4	4	1	14
184	Richd. Cox	1	1	2	2	1	1	1			6
185	Abraham Reed	2	1	2	1	1	1	1			6
186	John Siga		2	1	2	1	1	5	1	2	11
187	Samuel Bell		1	5			1	10	7	1	30
188	Henry Siga		1		1	1	1	1			2
189	John Siga						1				1
21	John Bell			1	1	1	1	1	1	1	6
30	Samuel Elyatt	1	1	1	1	1	1	2	1	1	6
31	J. S. Tiffin	1	1	2	1	1	1	5	5	1	19
32	J. W. Tiffin	4	1	2	1	1	1	3	1	1	11
33	Joseph Sumner	3	1	2	1	1	1	3			7
34	John Matten	4	1	2	1	2	1	4	3	1	17
35	Christoph. Hara	1	1	2	2	1	1	1			5
36	Bryan Lane	3	1	1	1	1	1	2			8
37	James Cannon	2	1	1	1	1	1	1			6
38	Mary Weaver	1		1	1	1	1	1			4
39	John Hendry	3	1	2	1	1	1	1			8
40	Wm. Rogers	2	1		1	1	1	1			5
41	David Little	1	1	1	1	1	1	2	1		7
42	Samuel Ford		1	1	1	1	1	3	2	1	9







201	Robert H. Hall	1	1	2	3	1	3	1	1	1	11	
202	Levi Hall	2	2	1	1	2	1	11	5	2	2	20
203	John Green	1	1	1	1	1	1	1	1	1	1	9
204	John Puffen	1	1	1	1	1	1	1	1	1	1	9
205	Samuel Hubbard	1	1	3	2	1	2	2	2	1	1	10
206	John Kemp	4	1	1	1	1	1	1	1	1	1	17
207	John King	1	1	2	1	1	1	1	1	1	1	10
208	John Liff	1	1	1	1	1	2	1	1	1	1	10
209	Samuel Bought	1	1	1	1	1	1	1	1	1	1	10
210	Matthew Jones	2	1	1	1	1	1	1	1	1	1	10
211	Joseph Moore	3	1	1	1	1	1	1	1	1	1	10
212	Richard Wood	1	1	1	1	1	1	1	1	1	1	10
213	Wm. Johnson	2	1	1	2	1	6	2	2	2	2	16
214	Samuel Phipps	1	1	1	1	1	1	1	1	1	1	9
215	Christopher Best	1	1	1	1	1	3	1	1	1	1	9
216	Wm. Waller	1	1	2	1	1	1	1	1	1	1	9
217	Henry Simmons	2	1	1	1	2	1	1	1	1	1	14
218	Joseph Tracy	3	3	1	1	1	1	1	1	1	1	14
219	Stephen Smith	1	1	3	1	1	1	1	1	1	1	10
220	Walter Davis	1	1	1	1	1	2	1	1	1	1	10
221	Wm. Ditch	3	1	1	1	1	2	1	1	1	1	10
222	Wm. Newby	1	1	1	2	1	1	1	1	1	1	10
223	A. W. Smeal	1	1	1	2	1	1	2	1	1	1	10
224	Philip Tappin	1	1	1	1	1	2	1	1	1	1	10
225	Edna Hancock	1	1	1	1	1	1	1	1	1	1	10
226	Wm. Marshall	2	1	1	2	1	1	1	1	1	1	10

227	Leah Collier	1	1	1	1	1	4	1	1	1	1	14
228	Esther Collier	1	1	1	1	1	1	1	1	1	1	9
229	David Kerr	3	3	1	1	1	2	1	1	1	1	14
230	Thomas Smith	1	1	1	1	1	1	1	1	1	1	9
231	Wm. Clark	1	1	1	1	1	1	1	1	1	1	9
232	John Jackson	1	1	1	1	1	1	1	1	1	1	9
233	Henry Jupp	1	1	1	1	1	1	1	1	1	1	9
234	Henry Bunting	1	1	1	1	1	1	1	1	1	1	9
235	John Robinson	1	1	1	1	1	1	1	1	1	1	9
236	Wm. Branch	1	1	1	1	1	1	1	1	1	1	9
237	Joseph Curry	2	1	1	1	1	1	1	1	1	1	9
238	Wm. Smith	2	1	1	1	1	3	1	1	1	1	9



307	Joseph Collier	3		1	1	1	1			5
310	Joseph Collier	4	2	1	1	1	3			11
311	Samuel Smith			1	1	2	1	1		6
312	Joseph Collier Sr		1	1		1	1			3
313	Nathan Hedge	3	1		1	2	1	3		9
314	Wm Hedge	2	2	1		1	2	1	1	9
315	Samuel Smith	1		1	1	3	1	1	1	11
316	Robert Brown	1		1	2	1		1		5
317	Marion Perryhill	1		1	1		1			3
318	Joseph Carpenter	1		1	2	1	1			6
319	Sam Brown	4	2		1	1	1	1	3	10
320	Thomas Semmes				1				4	12
321	Joseph Foster	5		1	1	1	2	2	3	1

2 2 1 1 2 5



322	J. M. Miller	2		1	1	1	4	2	1	7
323	John Smith	7	2	1	2	1	3			7
324	Luke Stapp	22		1	1	1	3			7
325	Samuel M. Gray	3		1	2	1	1			7
326	Jeremiah McDonald			1	1	2	2	1	2	11
327	J. A. Stapp	1		1	1	1	2	3	1	11
328	Allen Combs		1	2	3	1	1	2	1	6
329	Wm. Hamilton	4		1	1		1	1		7
330	Lucas Anderson	121	2	1	1	1	2	3		7
331	Wm. M. Gray	3	1	1	3	1	1	1	7	6
332	James Turner		1	1	1		1	1	3	5
333	David Turner			1		1	1	1		2







46	Fancy Smith	1	1	1	1				
47	Wm. Matheson		1	1	1	1			5
48	Stephen Butler	1	1	1	1				5
49	Henry Smith	1	1	2	1	1			6
50	John Woods		1	4	1	2	1	1	11
51	Samuel Davis	1	1	1	1	2			6
52	James Stephens	2	3	2	1	4	1	1	11

122



All other persons except Indians not listed

Females 44 and upwards

Females of 26 and under 44

Females of 14 and under 26

Females under fourteen

Males of 44 and upwards

Males of 26 and under 44

Males of fourteen and under 26

Males under fourteen

Number of persons engaged in Manufactures

Number of persons engaged in Commerce

Number of persons engaged in agriculture

Persons not naturalized

Free white females of 44 and upwards

Free white females of 26 and under 44

Free white females of sixteen and under twenty six

Free white females of ten and under sixteen

Free white females under ten years of age

Free white males of forty four and upwards

Free white males of twenty six and under forty four

Free white males of sixteen and under twenty six

Free white males between sixteen and eighteen

Free white of ten and under sixteen

Free white males under ten years



CERTIFICATE, to be signed by two respectable Inhabitants of the Division, and returned, annexed to the Schedule (No. 1.) by the Assistant to the Marshal.

*P. J. M. M. M.*

We hereby certify, that a correct copy of the above Schedule, signed by the said *P. J. M. M. M.* has been set up and remained at two of the most public places within the division, upon to the inspection of all concerned.

*Samuel Brown  
J. H. Brown*

2639  
1  
3  
1  
1  
1  
3  
18  
65  
66  
128  
28  
46  
78  
739  
0  
3  
774  
6  
97  
165  
175  
177  
385  
144  
145  
181  
55  
173  
419

*Number of heads of families 251*

*Sutton County*



Schofield County

It bounded North by Wayne and Wilkes Counties West by Emanuel and Montgomery Counties South by  
Jefferson and Warren Counties East by Liberty County and is about fifty miles in length and about twenty  
miles in breadth and the number of Miles I was required to travel in order to complete taking  
the South Census an enumeration of the inhabitants of said County was about 1200 Miles  
the 30th Oct 1820  
Elijah Shattuck



FOURTH CENSUS.

1820

POPULATION

GA.

WASHINGTON

124



































John [unclear]	2	1	2	1	2	2	1	1	2	2	2	2	2	2
Thomas [unclear]	1	1	4	1	1	2	1						1	
John [unclear]				1				1						
David [unclear]	2	1	2		1			1	3					
John [unclear]	4	4		1	3			1		4				
Joseph [unclear]	1	1		1	6	1	1		1					
John [unclear]	1			1	1			1	1	4	1			2
William [unclear]			1		1	1			1					
John [unclear]	1			1	4	1			1	5	4	1	1	4
Sarah [unclear]	1			1	2			1	1					
Enoch [unclear]	2	1		1	3			1	1					
John [unclear]	1	1		1				1	1	3			1	1
Mary [unclear]			1					1	1	1	2	1	2	1
Joshua [unclear]	2			1	1	1	1		1	4	2	2	1	2
Abney [unclear]	1	1		1				1		1			2	1
Chi [unclear]	1			1				1	1	1	4	4	4	1
Burke [unclear]	1			1	1			1						
Billy [unclear]				1	1			1						
Richard [unclear]		2		1		2	1		2	1	1		1	2
James [unclear]	2	1		1	1	1	1		1					
Harriette [unclear]	1	1	1	2		1			2	3	2		2	1
John [unclear]	1	1	1	1	2	1	1		2					
Thomas [unclear]			1		2	1	1							
Anna [unclear]		1	2	1	1			1	3	1	2			1
Reuben [unclear]			1					1	1					
Susanna [unclear]			1		1	2	1		1				1	
John [unclear]	2			1	1	1		1	1	2	2	1	4	2
John [unclear]	1			1	1			1						



















James David Cook			1	1	1		1		4	1	1	2
Robert Andrew			1		1		1		9	2	7	6
Richard King			1	2	2		1		2	2	2	2
Samuel Davis			1						1			
Samuel Dwyer			1									
Thomas Hill			1									
George H. Rogers			1									
Robert May	2			2	1	2	1		1	1	2	2
John King	1	2			1	1				1	1	2
John Dwyer			1	2		1			1	1	1	1
Samuel Dwyer	1		1		1				1			
William Bell	1		1	1	1	1	1		1	2	1	2
Thomas King	1		1	2	1	1			2		1	1
Richard King	1		1	2	1	1			2		1	1
William King	2		1	1	2	1			2		1	1
John King	1	1	1	1	2		1		2		1	1
Samuel Dwyer	1		1	1	1				1		1	
Henry King	1		1	1	1	1	1		1	1	2	2
John King			1	1	2	1	1		1	1	2	2
William King	1		1	1	2				1	1	2	2
William King	2		1	1	1	1			1	1	1	2
William King	1	1	2	1	1	1	1		1	3	2	1
William King			1		1				1	1	1	2
John King					1	1						
John King			1						1			
John King			1	1	1		2	1	1	1	2	2
John King	2								2	2		1





























































































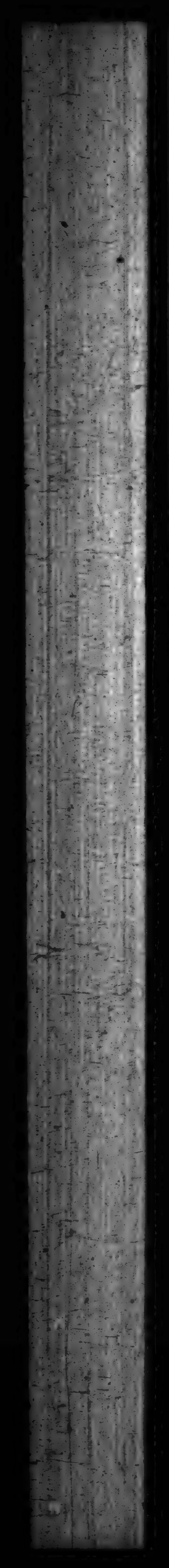














FOURTH CENSUS

1830

POPULATION

GA.

WAYNE.

148



[282]

The number of persons within my Division consisting of the different Sexes.  
 the 8 day of January in the year one thousand eight hundred and twenty 6.

149

Schedule of the

In the County  
 of Wayne

Names of  
 Heads of Families

Names of Heads of Families	Free white Males					Free white Females					Persons engaged in Agriculture	Persons engaged in Commerce	Persons engaged in other business	Males of families of persons engaged in other business	Males of families of persons engaged in other business	
	16 to 20	21 to 25	26 to 30	31 to 40	41 to 50	5 to 10	11 to 15	16 to 20	21 to 30							
Henry Salt	2	2	1	2	1	2			1		1					
John Kemp		1				1										
Henry Sumnerland	3	1		2		1	2	1	2	1						
Daniel Gibson		1		1		1	3		2	2	1		1		2	2
Margret Hops widow	1			1			2			1			1		1	1
John Fort		1		3		1			1		1		1		2	2
Robert Stafford	1	2	1	1		1	1	1	1		1		1		1	1
Total	7	8	1	9	1	5	9	2	7	15	4	7		7	7	2



Appears in a Schedule Lists annexed subscribed by me this  
 22<sup>nd</sup> Wm Weil Esq. Assistant to the Marshal of the District of Georgia

Whole number of persons within the division allotted to Wm Weil Esq.

Slaves				free colored persons			
Males		Females		Males		Females	
Males of twenty five and under forty five							
Males of forty five and upwards							
Females of under fourteen							
Females of fourteen and under twenty							
Females of twenty and under forty							
Females of forty five and upwards							
Males under fourteen years							
Males of fourteen and under twenty							
Males of twenty five and under forty							
Males of forty five and upwards							
Females under fourteen years							
Females of fourteen and under twenty							
Females of twenty five and under forty							
Females of forty five and upwards							
Sum also of forty five and upwards							
2	7	2					
	5	4		1			
	1	1	1	1			
	15	7	1	2			

Name	1	2	3	4	5	6	7	8	9	10	11	12	13	14	15	16	17	18	19	20
Aaron Streetland	2			2	1			3	1	3	1									
Mary Densorn	1			1							1									
Mary Hall	2							1			1									
Treasa Parrie	1	1		1						1	1									
Wm Howle	1			2			1	1										3	0	1
Isaac Howle				1																
Thomas Fullwood							1		1		1									1
Mary Fair	1			1					1	1										
James Hogen		2					1	1		1										
Wm Menden	1			1			1	1												
Angus McDonald	1						1	3		1										
Rele Ochie	1						1	1	1											
James Streetland				1			1	3		1										
James Vorpe	1						1	3		1										
Benjamin Mosby				1	5					1										
Andrew N. Schuster		1		1				1		1										
James Sapp	0				1			1												
John Truman					1			3												
Stephen Browning					1			4	1		1	1								
Wm Weil		1	1				1		1		1									
J. Clark Bryan	1	1	1				1	1			1									
David, the Kempt	1				1			1		1										
Total	17	6	2	13	11	7	26	7	15	7	7	1	21						7	7















350

Wayne Co  
Geo O Nash  
1821







FOURTH CENSUS

1820

POPULATION

GA.

WILKES

161































































Name of the	White Males					African Males					Total
	18	19	20	21	22	23	24	25	26	27	
Wm. D. Wright	1										1
Wm. D. Wright	1										1
Richard Burdett											9
Elizabeth Mully	1										1
Benjamin Shreve											20
Joseph Love											12
Elizabeth Matthews	3	1	1	2							7
John Burdett	1										2
John Wells	2	1	1								4
W. Benson	1	2									3
Lucas Jackson	1										2
Catherine Smith	1	1									2
John Thompson											2
Margaret Watson	1										1
Augustus White											1
John White											6
Francis Cook											3
Joseph Shepherd	1										1
W. Thompson	2										5
Abner East											2
Joseph White	1	1	1								3
Elizabeth White	1	1	1								3
John White	2										5
William Martin											2
George Anderson											1
Thomas Williams	1										1
John Porter											3
Benjamin Freeman											2
W. Thompson	1	1									2
Joseph White											8
W. Robinson	1										5
Joseph White											1
John White	1										1
Joseph White	2										1
George Pullen											2
John White	1										1
Joseph White											1

Name of the	White Males					African Males					Total
	18	19	20	21	22	23	24	25	26	27	
Wm. D. Wright	1										1
Richard Burdett											9
Elizabeth Mully	1										1
Benjamin Shreve											20
Joseph Love											12
Elizabeth Matthews	3	1	1	2							7
John Burdett	1										2
John Wells	2	1	1								4
W. Benson	1	2									3
Lucas Jackson	1										2
Catherine Smith	1	1									2
John Thompson											2
Margaret Watson	1										1
Augustus White											1
John White											6
Francis Cook											3
Joseph Shepherd	1										1
W. Thompson	2										5
Abner East											2
Joseph White	1	1	1								3
Elizabeth White	1	1	1								3
John White	2										5
William Martin											2
George Anderson											1
Thomas Williams	1										1
John Porter											3
Benjamin Freeman											2
W. Thompson	1	1									2
Joseph White											8
W. Robinson	1										5
Joseph White											1
John White	1										1
Joseph White	2										1
George Pullen											2
John White	1										1
Joseph White											1



































*[Faint, illegible handwritten text, possibly bleed-through from the reverse side of the page]*

*[Faint, illegible handwritten text, possibly bleed-through from the reverse side of the page]*







*[Faint, illegible handwriting]*

*[Faint, illegible handwriting]*



























12307

Number of inhabitants in  
the District

December 18<sup>th</sup> 1820

John T. Gray

Appellate to the Associate  
of the District of Georgia



FOURTH CENSUS

1820

POPULATION

GA.

WILKINSON

201























254 Schedule of the whole numbers of Persons Within

	Free white Males					Free white females				
	10	11	12	13	14	15	16	17	18	19
James Smith					1					
John Smith	2				1					
Paul M. Lewis	1				1					
Benjamin Williams	1				1					
Robert Hamilton	1				1					
Thomas Jones	2				1					
Samuel White	2				1					
David Clark	2				1					
James Gibson	3	1			1					
Joseph Garrett	2	1	1	1	1					
William Wilson	3	1			1					
Walter Hall	1	1			1					
Henry Miller	1				1					
George Taylor	1				1					
John Brown	1				1					
Robert King	1				1					
Thomas Green	1				1					
Samuel Adams	1				1					
David Nelson	1				1					
James Mitchell	1				1					
Joseph Carter	1				1					
William Evans	1				1					
Robert Foster	1				1					
Thomas Young	1				1					
Samuel King	1				1					
David Lee	1				1					
James Hall	1				1					
Joseph White	1				1					
William Black	1				1					
Robert Gray	1				1					
Thomas Green	1				1					
Samuel King	1				1					
David Lee	1				1					
James Hall	1				1					
Joseph White	1				1					
William Black	1				1					
Robert Gray	1				1					
Thomas Green	1				1					
Samuel King	1				1					
David Lee	1				1					
James Hall	1				1					
Joseph White	1				1					
William Black	1				1					
Robert Gray	1				1					
Thomas Green	1				1					
Samuel King	1				1					
David Lee	1				1					
James Hall	1				1					
Joseph White	1				1					
William Black	1				1					
Robert Gray	1				1					
Thomas Green	1				1					
Samuel King	1				1					
David Lee	1				1					
James Hall	1				1					
Joseph White	1				1					
William Black	1				1					
Robert Gray	1				1					
Thomas Green	1				1					
Samuel King	1				1					
David Lee	1				1					
James Hall	1				1					
Joseph White	1				1					
William Black	1				1					
Robert Gray	1				1					
Thomas Green	1				1					
Samuel King	1				1					
David Lee	1				1					
James Hall	1				1					
Joseph White	1				1					
William Black	1				1					
Robert Gray	1				1					
Thomas Green	1				1					
Samuel King	1				1					
David Lee	1				1					
James Hall	1				1					
Joseph White	1				1					
William Black	1				1					
Robert Gray	1				1					
Thomas Green	1				1					
Samuel King	1				1					
David Lee	1				1					
James Hall	1				1					
Joseph White	1				1					
William Black	1				1					
Robert Gray	1				1					
Thomas Green	1				1					
Samuel King	1				1					
David Lee	1				1					
James Hall	1				1					
Joseph White	1				1					
William Black	1				1					
Robert Gray	1				1					
Thomas Green	1				1					
Samuel King	1				1					
David Lee	1				1					
James Hall	1				1					
Joseph White	1				1					
William Black	1				1					
Robert Gray	1				1					
Thomas Green	1				1					
Samuel King	1				1					
David Lee	1				1					
James Hall	1				1					
Joseph White	1				1					
William Black	1				1					
Robert Gray	1				1					
Thomas Green	1				1					
Samuel King	1				1					
David Lee	1				1					
James Hall	1				1					
Joseph White	1				1					
William Black	1				1					
Robert Gray	1				1					
Thomas Green	1				1					
Samuel King	1				1					
David Lee	1				1					
James Hall	1				1					
Joseph White	1				1					
William Black	1				1					
Robert Gray	1				1					
Thomas Green	1				1					
Samuel King	1				1					
David Lee	1				1					
James Hall	1				1					
Joseph White	1				1					
William Black	1				1					
Robert Gray	1				1					
Thomas Green	1				1					
Samuel King	1				1					
David Lee	1				1					
James Hall	1				1					
Joseph White	1				1					
William Black	1				1					
Robert Gray	1				1					
Thomas Green	1				1					
Samuel King	1				1					
David Lee	1				1					
James Hall	1				1					
Joseph White	1				1					
William Black	1				1					
Robert Gray	1				1					
Thomas Green	1				1					
Samuel King	1				1					
David Lee	1				1					
James Hall	1				1					
Joseph White	1				1					
William Black	1				1					
Robert Gray	1				1					
Thomas Green	1				1					
Samuel King	1				1					
David Lee	1				1					
James Hall	1				1					
Joseph White	1				1					
William Black	1				1					
Robert Gray	1				1					
Thomas Green	1				1					
Samuel King	1				1					
David Lee	1				1					
James Hall	1				1					
Joseph White	1				1					
William Black	1				1					
Robert Gray	1				1					
Thomas Green	1				1					
Samuel King	1				1					
David Lee	1				1					
James Hall	1				1					
Joseph White	1				1					
William Black	1				1					
Robert Gray	1				1					
Thomas Green	1				1					
Samuel King	1				1					
David Lee	1				1					
James Hall	1				1					
Joseph White	1				1					
William Black	1				1					
Robert Gray	1				1					
Thomas Green	1				1					
Samuel King	1				1					
David Lee	1				1					
James Hall	1				1					
Joseph White	1				1					
William Black	1				1					
Robert Gray	1				1					
Thomas Green	1				1					
Samuel King	1				1					
David Lee	1				1					
James Hall	1				1					
Joseph White	1				1					
William Black	1				1					
Robert Gray	1				1					
Thomas Green	1				1					
Samuel King	1				1					
David Lee	1				1					
James Hall	1				1					
Joseph White	1				1					
William Black	1				1					
Robert Gray	1				1					
Thomas Green	1				1					
Samuel King	1				1					
David Lee	1				1					
James Hall	1				1					
Joseph White	1				1					
William Black	1				1					
Robert Gray	1				1					
Thomas Green	1				1					
Samuel King	1				1					
David Lee	1				1					
James Hall	1				1					
Joseph White	1				1					
William Black	1				1					
Robert Gray	1				1					
Thomas Green	1				1					
Samuel King	1				1					
David Lee	1				1					
James Hall	1				1					
Joseph White	1									







40 Schedule of the Whole number of Persons

	Free White Males					Free White Females				
	11	16	21	26	31	11	16	21	26	31
...	1									
...	2									
...	3									
...	4									
...	5									
...	6									
...	7									
...	8									
...	9									
...	10									
...	11									
...	12									
...	13									
...	14									
...	15									
...	16									
...	17									
...	18									
...	19									
...	20									
...	21									
...	22									
...	23									
...	24									
...	25									
...	26									
...	27									
...	28									
...	29									
...	30									
...	31									
...	32									
...	33									
...	34									
...	35									
...	36									
...	37									
...	38									
...	39									
...	40									
...	41									
...	42									
...	43									
...	44									
...	45									
...	46									
...	47									
...	48									
...	49									
...	50									
...	51									
...	52									
...	53									
...	54									
...	55									
...	56									
...	57									
...	58									
...	59									
...	60									
...	61									
...	62									
...	63									
...	64									
...	65									
...	66									
...	67									
...	68									
...	69									
...	70									
...	71									
...	72									
...	73									
...	74									
...	75									
...	76									
...	77									
...	78									
...	79									
...	80									
...	81									
...	82									
...	83									
...	84									
...	85									
...	86									
...	87									
...	88									
...	89									
...	90									
...	91									
...	92									
...	93									
...	94									
...	95									
...	96									
...	97									
...	98									
...	99									
...	100									

Within the County of ...

	Males					Females				
	11	16	21	26	31	11	16	21	26	31
...	1									
...	2									
...	3									
...	4									
...	5									
...	6									
...	7									
...	8									
...	9									
...	10									
...	11									
...	12									
...	13									
...	14									
...	15									
...	16									
...	17									
...	18									
...	19									
...	20									
...	21									
...	22									
...	23									
...	24									
...	25									
...	26									
...	27									
...	28									
...	29									
...	30									
...	31									
...	32									
...	33									
...	34									
...	35									
...	36									
...	37									
...	38									
...	39									
...	40									
...	41									
...	42									
...	43									
...	44									
...	45									
...	46									
...	47									
...	48									
...	49									
...	50									
...	51									
...	52									
...	53									
...	54									
...	55									
...	56									
...	57									
...	58									
...	59									
...	60									
...	61									
...	62									
...	63									
...	64									
...	65									
...	66									
...	67									
...	68									
...	69									
...	70									
...	71									
...	72									
...	73									
...	74									
...	75									
...	76									
...	77									
...	78									
...	79									
...	80									
...	81									
...	82									
...	83									
...	84									
...	85									
...	86									
...	87									
...	88									
...	89									
...	90									
...	91									
...	92									
...	93									
...	94									
...	95									
...	96									
...	97									
...	98									
...	99									
...	100									







Schedule of the Male and Female Persons

Name	Free white Males				Free white Females			
	Under 16	16 to 20	20 to 30	30 to 45	Under 16	16 to 20	20 to 30	30 to 45
William Brown	2		1	3	1	1		
William McGowan	2		1	1	1	1		
William Williams	1		1	2	1	1		
John Johnson	1		1	1	1	1		
James Robinson	2		1	1	1	1		
Wm. Smith	1		1	1	1	1		
John Woodland	1		1	1	1	1		
Richard Johnson	2		1	1	1	1		
James Wilson	2	2	2	1	1	1		
John Anderson	1		1	1	1	1		
William Starbuck	1		1	1	1	1		
John Starbuck	1		1	1	1	1		
Francis Vance	1		1	1	1	1		
Thomas Underwood	2		1	1	1	1		
James Young	1		1	1	1	1		
Mary Mitchell	1		1	1	1	1		
William R. Lucas	3		1	1	1	1		
John Collier	1	1	1	1	1	1		
Lucy Young	3		1	1	1	1		
Harriet Taylor	1		1	1	1	1		
Lynna White	1	2	1	1	1	1		
Harriet Davis	5		1	1	1	1		
Elizabeth Turner	3	1	1	1	1	1		
John Miller	1		1	1	1	1		
James Mitchell	1		1	1	1	1		
James Shelby	1		1	1	1	1		
James Longley	2		1	1	1	1		
James Johnson	1	1	1	1	1	1		
Stephen Young	1		1	1	1	1		
James Smith	3	1	1	1	1	1		
James Scott	1		1	1	1	1		
John Brambley	1	1	1	1	1	1		
Henry Miller	1		1	1	1	1		
John Miller	1		1	1	1	1		
Richard Doudson	2	1	1	1	1	1		
John Little	2		1	1	1	1		
James Craft	1		1	1	1	1		
John Craft	2	1	1	1	1	1		
James Kent	1	1	1	1	1	1		
James Chandler	1	1	1	1	1	1		
William Priest	2	1	1	1	1	1		
James M. Carter	1		1	1	1	1		
<b>Total</b>	<b>43</b>	<b>11</b>	<b>20</b>	<b>15</b>	<b>16</b>	<b>19</b>	<b>26</b>	<b>19</b>

Within the County of Michigan

Name	Slaves				Free colored persons			
	Males	Females	Males	Females	Males	Females	Males	Females
William Brown	1	0	1	0	0	0	0	0
William McGowan	1	0	1	0	0	0	0	0
William Williams	1	0	1	0	0	0	0	0
John Johnson	1	0	1	0	0	0	0	0
James Robinson	1	0	1	0	0	0	0	0
Wm. Smith	1	0	1	0	0	0	0	0
John Woodland	1	0	1	0	0	0	0	0
Richard Johnson	1	0	1	0	0	0	0	0
James Wilson	1	0	1	0	0	0	0	0
John Anderson	1	0	1	0	0	0	0	0
William Starbuck	1	0	1	0	0	0	0	0
John Starbuck	1	0	1	0	0	0	0	0
Francis Vance	1	0	1	0	0	0	0	0
Thomas Underwood	1	0	1	0	0	0	0	0
James Young	1	0	1	0	0	0	0	0
Mary Mitchell	1	0	1	0	0	0	0	0
William R. Lucas	1	0	1	0	0	0	0	0
John Collier	1	0	1	0	0	0	0	0
Lucy Young	1	0	1	0	0	0	0	0
Harriet Taylor	1	0	1	0	0	0	0	0
Lynna White	1	0	1	0	0	0	0	0
Harriet Davis	1	0	1	0	0	0	0	0
Elizabeth Turner	1	0	1	0	0	0	0	0
John Miller	1	0	1	0	0	0	0	0
James Mitchell	1	0	1	0	0	0	0	0
James Shelby	1	0	1	0	0	0	0	0
James Longley	1	0	1	0	0	0	0	0
James Johnson	1	0	1	0	0	0	0	0
Stephen Young	1	0	1	0	0	0	0	0
James Smith	1	0	1	0	0	0	0	0
James Scott	1	0	1	0	0	0	0	0
John Brambley	1	0	1	0	0	0	0	0
Henry Miller	1	0	1	0	0	0	0	0
John Miller	1	0	1	0	0	0	0	0
Richard Doudson	1	0	1	0	0	0	0	0
John Little	1	0	1	0	0	0	0	0
James Craft	1	0	1	0	0	0	0	0
John Craft	1	0	1	0	0	0	0	0
James Kent	1	0	1	0	0	0	0	0
James Chandler	1	0	1	0	0	0	0	0
William Priest	1	0	1	0	0	0	0	0
James M. Carter	1	0	1	0	0	0	0	0
<b>Total</b>	<b>43</b>	<b>11</b>	<b>20</b>	<b>15</b>	<b>16</b>	<b>19</b>	<b>26</b>	<b>19</b>











Schedule of the whole number of persons

	Free white Males					Free white Females				
	6	11	16	21	26	6	11	16	21	26
William Ferrell	1					1				
Joseph Hill		1					1			
Henry Cavendish			1					1		
Henry Hill	2					2				
Thomas Brown	1					1				
Thomas Pearce	2					2				
Bennett Farrell	1		1			1		1		
William Mohr	2					2				
Thomas Condit	2					2				
James Tate	1					1				
William Holt		1					1			
James Holt			1					1		
William Harrison			1					1		2
Charles Clark				1					1	
James Harrison	1					1				1
William Harrison			1					1		
Robert Hill	2					2				
Daniel Justice	3	3				3	3			
John Keate	3	3				3	3			
Mary Laughlin	3	1				3	1			
Thomas Justice	1					1				
Thomas Lawson	1					1				
Benjamin Pierce			1					1		
Charles Pierce	2					2				
Thomas Pierce				1					1	
George Smith				1					1	
William Cannon	2					2				
James Justice	2	1				2	1			
Elizabeth Galt			2	2				2	2	
James Smith	1					1				
James Galt				1					1	
Jonathan Galt									1	
Robert Galt				1					1	
James Galt	1	2				1	2			
James Galt			1					1		
James Galt	1	2				1	2			
James Galt	1					1				
<b>Total</b>	<b>39</b>	<b>19</b>	<b>6</b>	<b>4</b>	<b>10</b>	<b>36</b>	<b>14</b>	<b>29</b>	<b>13</b>	<b>13</b>

White the County of Westchester

	Free white Males				Free white Females			
	6	11	16	21	6	11	16	21
1								
2								
3								
4								
5								
6								
7								
8								
9								
10								
11								
12								
13								
14								
15								
16								
17								
18								
19								
20								
21								
22								
23								
24								
25								
26								
27								
28								
29								
30								
31								
32								
33								
34								
35								
36								
37								
38								
39								
40								
41								
42								
43								
44								
45								
46								
47								
48								
49								
50								
51								
52								
53								
54								
55								
56								
57								
58								
59								
60								
61								
62								
63								
64								
65								
66								
67								
68								
69								
70								
71								
72								
73								
74								
75								
76								
77								
78								
79								
80								
81								
82								
83								
84								
85								
86								
87								
88								
89								
90								
91								
92								
93								
94								
95								
96								
97								
98								
99								
100								
101								
102								
103								
104								
105								
106								
107								
108								
109								
110								
111								
112								
113								
114								
115								
116								
117								
118								
119								
120								
121								
122								
123								
124								
125								
126								
127								
128								
129								
130								
131								
132								
133								
134								
135								
136								
137								
138								
139								
140								
141								
142								
143								
144								
145								
146								
147								
148								
149								
150								
151								
152								
153								
154								
155								
156								
157								
158								
159								
160								
161								
162								
163								
164								
165								
166								
167								
168								
169								
170								
171								
172								
173								
174								
175								
176								
177								
178								
179								
180								
181								
182								
183								
184								
185								
186								
187								
188								
189								
190								
191								
192								
193								
194								
195								
196								
197								
198								
199								
200								
201								
202								
203								
204								
205								
206								
207								
208								
209								
210								
211								
212								
213								
214								
215								
216								
217								
218								
219</								







Within the County of *McKinnon*  
Slaves *free colored persons*



































William A. ... of ...

James ...



















*Table of the Whole Number of Persons*

*And White Males Free White Males*

1800	1810	1820	1830	1840	1850	1860	1870	1880	1890	1900	1910	1920	1930	1940	1950	1960	1970	1980	1990	2000
11	11	1	11	6	7	2	5	6	3	6	36	1	7							
12	15	5	20	12	12	29	13	12	19	7	69		4							
13	17	2	21	16	9	31	17	22	12	11	66	1	6							
14	16	3	15	25	10	18	16	27	17	12	105	2	11							
15	21	3	17	27	6	49	8	19	24	8	83	1	10							
16	17	6	20	25	11	57	18	32	20	9	94	1	11							
17	20	4	26	20	14	46	15	19	17	18	90	6	16							
18	21	3	13	27	10	49	11	16	23	11	93	1	12							
19	13	3	27	24	19	41	14	17	24	9	79	1	16							
20	16	1	24	15	14	41	19	19	25	9	89	1	19							
21	22	2	16	30	12	43	16	20	28	7	94	1	26							
22	1	4	17	14	15	42	20	17	21	10	90	1	16							
23	17		24	15	10	36	14	19	18	13	74	3	10							
24	16	2	28	11	17	65	20	18	19	11	78		19							
25	13	2	19	23	15	36	10	20	11	15	57	1	2							
26	11	1	17	22	9	37	13	16	41	8	71		10							
27	7	1	24	11	15	30	15	22	11	15	63	3	1							
28	11		14	13	17	41	13	18	22	8	75		1							
29	10	2	17	13	11	41	24	17	20	12	84	4	15							
30	15	3	25	15	12	47	17	19	10	14	76	4	10							
31	12	2	14	27	6	30	15	15	26	8	58	1	2							
32	12	2	1	20	16	41	23	25	22	6	71	7	1							
33	14	1	10	17	14	38	20	22	18	18	58	3	2							
34	18	3	12	9	10	25	9	17	11	18	48		10							
35	17	6	16	21	6	23	11	11	18	6	78	15	10							
36	16	5	17	15	14	18	14	17	15	19	100	23	60							
37	17	3	12	15	12	18	13	13	12	12	61		11							
38	14	1	10	13	13	10	15	10	10	10	144	12	4							

*William C. ...*

*Table of the County of ...*

1800	1810	1820	1830	1840	1850	1860	1870	1880	1890	1900	1910	1920	1930	1940	1950	1960	1970	1980	1990	2000
11	11	1	11	6	7	2	5	6	3	6	36	1	7							
12	15	5	20	12	12	29	13	12	19	7	69		4							
13	17	2	21	16	9	31	17	22	12	11	66	1	6							
14	16	3	15	25	10	18	16	27	17	12	105	2	11							
15	21	3	17	27	6	49	8	19	24	8	83	1	10							
16	17	6	20	25	11	57	18	32	20	9	94	1	11							
17	20	4	26	20	14	46	15	19	17	18	90	6	16							
18	21	3	13	27	10	49	11	16	23	11	93	1	12							
19	13	3	27	24	19	41	14	17	24	9	79	1	16							
20	16	1	24	15	14	41	19	19	25	9	89	1	19							
21	22	2	16	30	12	43	16	20	28	7	94	1	26							
22	1	4	17	14	15	42	20	17	21	10	90	1	16							
23	17		24	15	10	36	14	19	18	13	74	3	10							
24	16	2	28	11	17	65	20	18	19	11	78		19							
25	13	2	19	23	15	36	10	20	11	15	57	1	2							
26	11	1	17	22	9	37	13	16	41	8	71		10							
27	7	1	24	11	15	30	15	22	11	15	63	3	1							
28	11		14	13	17	41	13	18	22	8	75		1							
29	10	2	17	13	11	41	24	17	20	12	84	4	15							
30	15	3	25	15	12	47	17	19	10	14	76	4	10							
31	12	2	14	27	6	30	15	15	26	8	58	1	2							
32	12	2	1	20	16	41	23	25	22	6	71	7	1							
33	14	1	10	17	14	38	20	22	18	18	58	3	2							
34	18	3	12	9	10	25	9	17	11	18	48		10							
35	17	6	16	21	6	23	11	11	18	6	78	15	10							
36	16	5	17	15	14	18	14	17	15	19	100	23	60							
37	17	3	12	15	12	18	13	13	12	12	61		11							
38	14	1	10	13	13	10	15	10	10	10	144	12	4							



ES



